

72 Highbrook Drive, El Kobar Units

HIGHBROOK



WAREHOUSE + OFFICE



Warehouse

1,398 sqm

Office
(over 2 levels)

357 sqm

Canopy

277 sqm

Yard

139 sqm

Car parks

22

Availability

Now



72 Highbrook Drive
El Kobar Units

KEY FEATURES

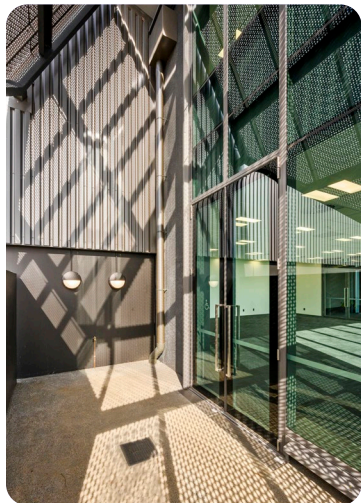
High quality warehouse unit space, located in proximity of the Highbrook Crossing amenities. Including cafés, restaurants, gym and accommodation.

Signage opportunities on Highbrook Drive

Surrounded by Panasonic, Ford and Active Healthcare

9m to underside of knee

EV Charger



STRATEGIC LOCATION

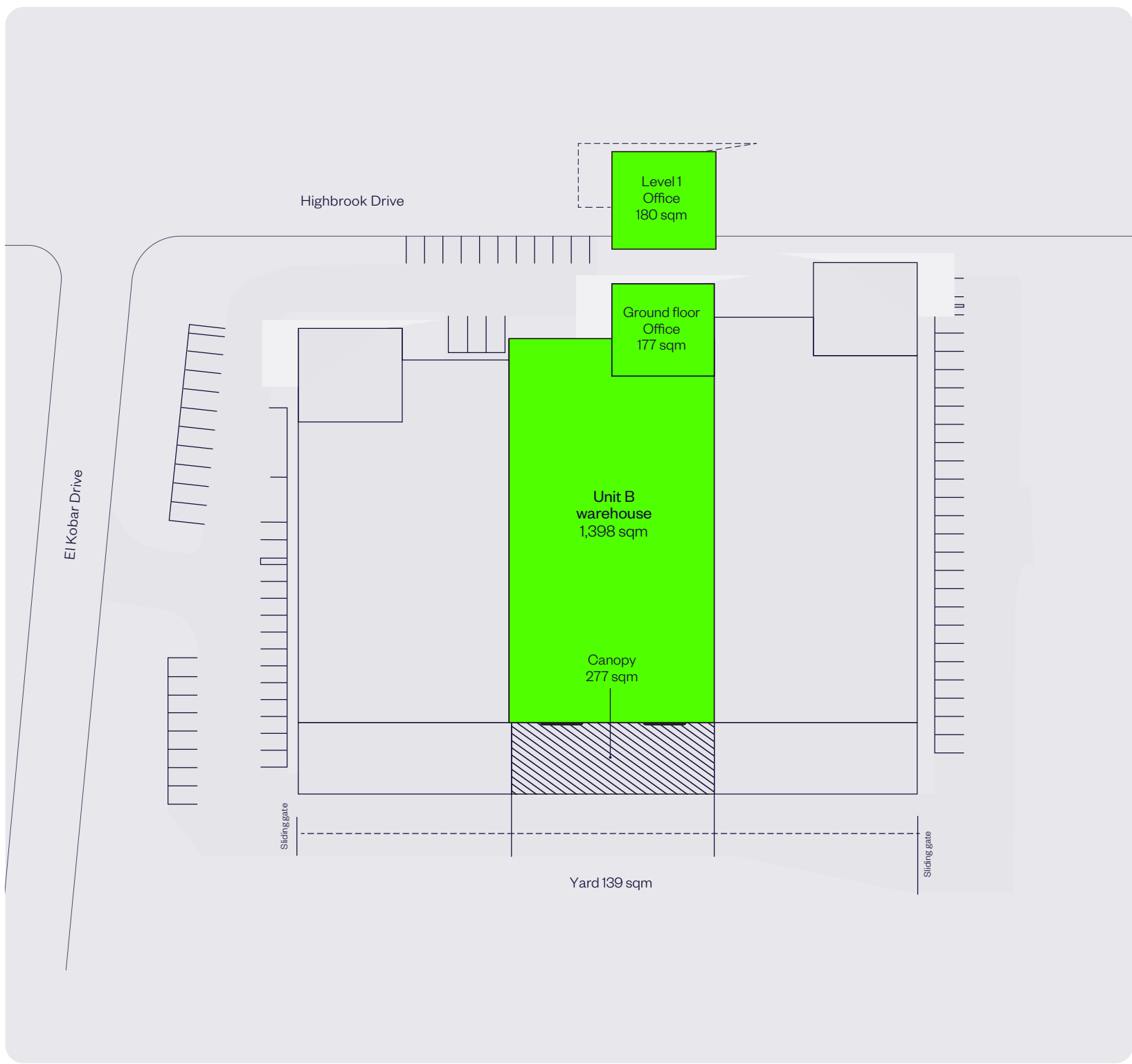
Located in East Tāmaki, just off the Southern Motorway, Highbrook Business Park is easily accessible from any direction. Its clearly marked road system makes navigation within the park simple. Highbrook Drive boasts a high profile with over 30,000 commuters every day. Highbrook Crossing, the hub of Highbrook, offers ample car parking, bus stops, cafés, restaurants, a gym, and childcare facilities.



SITE PLAN

| | |
|------------------------|------------------|
| Warehouse | 1,398 sqm |
| Office (over 2 levels) | 357 sqm |
| Yard | 139 sqm |
| Canopy | 277 sqm |
| Car parks | 22 |

Address
72 Highbrook Drive,
El Kobar Units,
East Tāmaki, Auckland



KEY INFRASTRUCTURE HIGHBROOK BUSINESS PARK



AUCKLAND AIRPORT



WIRI INLAND PORT



SH20



TRAIN



SH1



METRO PORT



AUCKLAND CBD



PORTS OF AUCKLAND

HIGHBROOK BUSINESS PARK

Key Features



1km to SH1



5km to Botany Town Centre



16km to Airport



18km to CBD

HIGHBROOK BUSINESS PARK

DRIVE TIME REACH

Data taken from
60 Highbrook Drive
as at 11 May 2026.

10 MIN DRIVE TIME REACH

 **80,000**
POPULATION

 **2.9bn**
PURCHASING POWER

20 MIN DRIVE TIME REACH

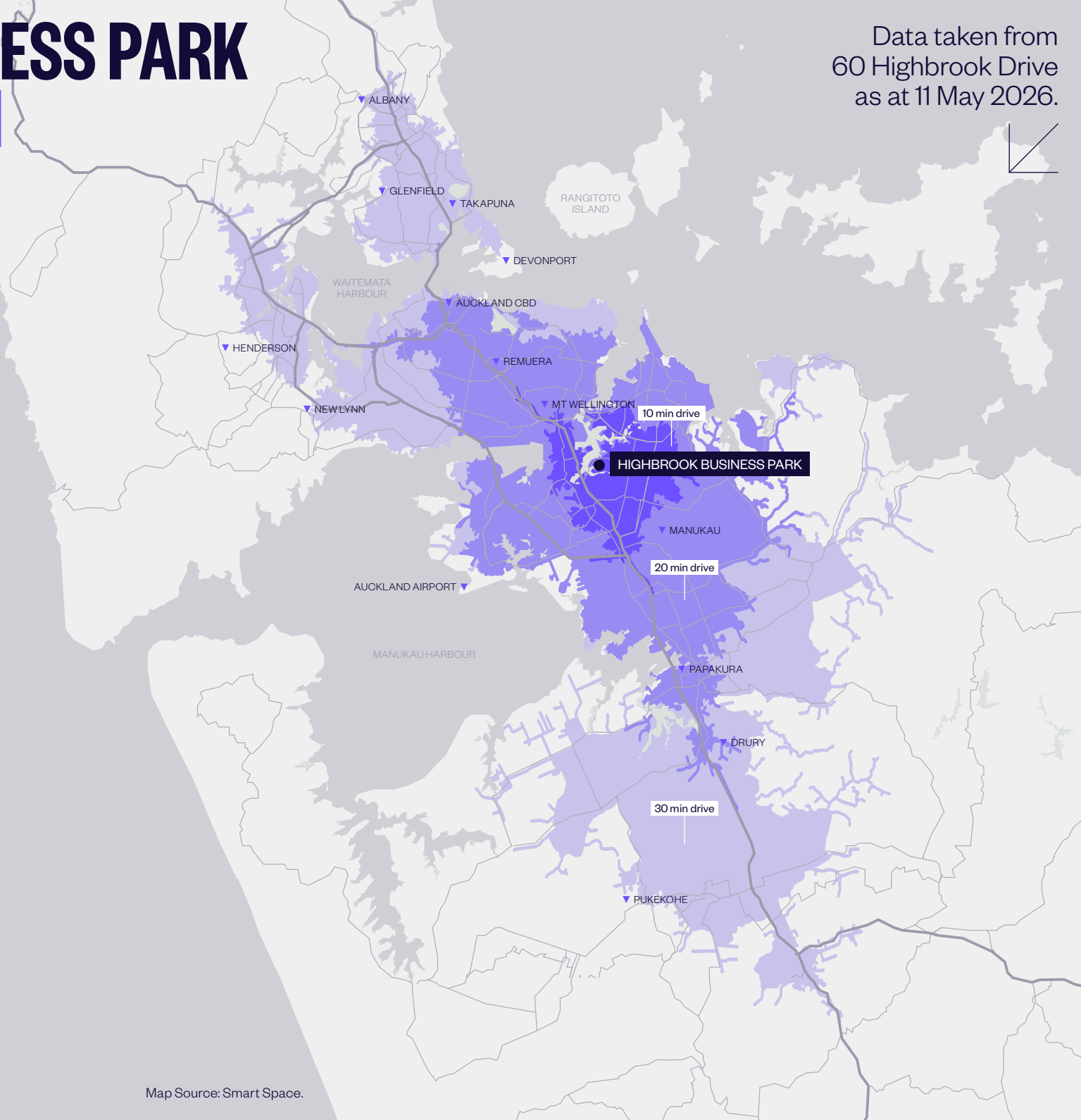
 **560,000**
POPULATION

 **22.5bn**
PURCHASING POWER

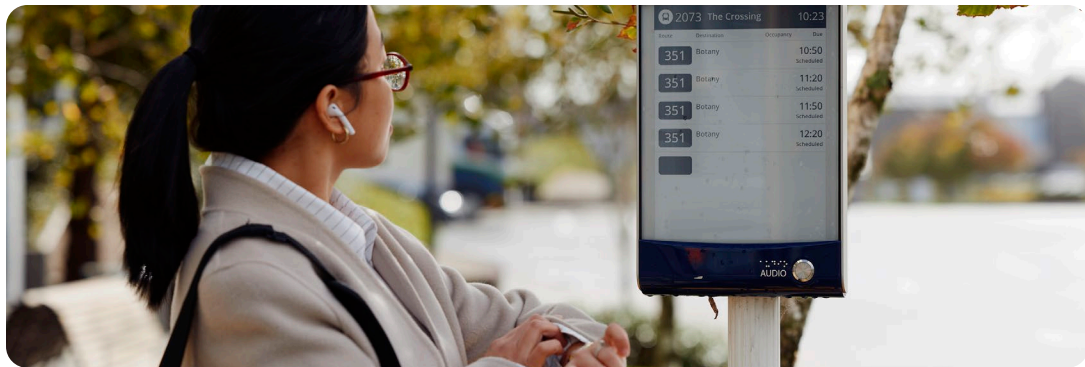
30 MIN DRIVE TIME REACH

 **980,000**
POPULATION

 **44.4bn**
PURCHASING POWER



* Purchasing Power describes the disposable income (income without taxes and social security contributions, including received transfer payments) of a certain area's population. The figures are in New Zealand Dollars (NZD). Population is rounded to the nearest 10,000. Source: Michael Bauer Research 2021. Drive times are taken at 12pm. Source: Esri. These statistics are provided as an indicative guide and while care has been taken in relation to accuracy, no warranty is given or implied.



HIGHBROOK PUBLIC TRANSPORT

A number of bus routes directly service Highbrook, providing easy connections across Auckland.

Buses

- + **37** Manurewa, Clendon, Puhinui Station, Preston Road, Highbrook
 - + Operates 7 days a week from approximately 5am to midnight
 - + Every 15 minutes between 6am-7pm (Mon-Fri) and 7am-7pm (weekends and public holidays)
 - + A convenient option for connecting with Southern Line trains and Airport Link buses at Puhinui Station
- + **351** Botany, Highbrook, Ōtāhuhu Town Centre, Ōtāhuhu Station
 - + Operates Monday to Friday only
 - + Runs every 20-30 minutes between approximately 6am and 6:30pm
- + **352** Panmure Station, Highbrook, East Tāmaki, Manukau Station

- + Operates Monday to Friday during peak hours only
- + Runs every 20 minutes
- + Nearby bus services

The following routes run close to Highbrook and offer additional travel options:

- + **31** Māngere Town Centre, Papatoetoe, Hunters Corner, Ōtara, Botany
- + **70** Botany, Pakūranga, Panmure, Ellerslie, Newmarket, City Centre
- + **353** Manukau, Preston Road, Springs Road, Harris Road, Botany Town Centre

Trains

The Eastern and Southern line trains are available at Ōtāhuhu train station, located 2 km away from Highbrook Business Park. Only a 30 minute ride on bus line **351**.



Travel facts:

- Highbrook to City Centre: approximately 1 hour, adult fare \$6.50
- Highbrook to Airport: around 40 minutes by bus, adult fare \$3.00
- Highbrook to Puhinui Station: around 25 minutes, adult fare \$3.00
- Highbrook to Papakura: just under 1 hour, adult fare \$4.90
- Route 37 (Clover Park to Highbrook): approximately 15 minutes, adult fare \$3.00

To plan your journey, use the Journey Planner for real-time routes, timetables and fares.





HIGHBROOK BUSINESS PARK LOCAL AMENITIES

Highbrook Crossing — a focal point for a growing community.

Banks & professional services

- + Kiwibank Business Banking
- + Wynyard Wood
Lawyers & Notaries
- + RSM Accountants
- + Colliers
- + Barfoot & Thompson
- + Public Trust
- + EarnLearn
- + BSM Group Architects
- + BNZ Partners
- + BDO — Auckland
- + Forsyth Barr Investment
Advisors
- + Professional Building
Consultants
- + APD Global
- + Co\working Highbrook

Accommodation

- + Quest Highbrook
Serviced Apartments
providing 120 rooms

Highbrook Parklands

Beautiful parklands with 8 km cycle, running, walking track and stunning coastal views over the Tamaki River.

Childcare

- + Active Explorers' Childcare

Fitness

- + Jetts 24-hour Fitness

Convenience retail

- + Z Service Station
- + Highbrook Superette

Cafés and restaurants

- + Subway
- + Hollywood Bakery Espresso
- + Kagura Sushi Donburi Bánh Mi
- + Namaste Indian Restaurant
& Bar
- + Olea Café & Eatery
- + Tuck Shop
- + The Banker — coming soon

Car parking

- + Highbrook Crossing has 90 minutes free parking pay by plate car parks and temporary short term parks
- + A multi-level car park providing 343 spaces

Zilch car hire parking

- + Zilch is a car sharing service that offers on demand, zero-emissions EVs for hire by the hour, day or weekend.

EV Charging

- + Two ChargeNet fast chargers, providing 3x CCS and 1x CHAdeMO, are located in the 90 minute free car park on Tūhana Lane.

Medical

Highbrook Medical Hub provides doctors, pharmacy, clinical psychologists, dentists and physiotherapists.

They also have a mobile consult van with a clinical team that can come to your office and perform health checks with your team. Very handy for everyone at Highbrook to visit.

HIGHBROOK WALKING & BIKING TRACKS



P Street and public car parks shown

P EV charger station

H Hivebrook: Honeybee hives

N Ngahere: Native plantings and rest area

Dogs must be on-leash and are not permitted in foreshore areas.



Highbrook North Shared Path

Starts at 55 Waiouru Road

Enjoy great views across to Maungarei (Mt Wellington) and Maungakiekie (One Tree Hill). There are plenty of spots (including seating areas) along the way to catch your breath and admire the view.

11 km Return | 110 Minutes by foot | 55 Minutes by bike

Highbrook South Shared Path

Starts at 12 Pukekiwiriki Place

Easily manageable on foot or bike, perfect for a peaceful spot of lunchtime exercise. Extend your ride or walk by joining up with the Highbrook Path on the other side of Highbrook Drive.

5 km Return | 60 Minutes by foot | 30 Minutes by bike

Highbrook loop

Start anywhere on the loop or start and finish at the cafés at Highbrook Crossing, 60 Highbrook Drive.

8 km of the loop path is on the parklands and 2 km along the street footpaths.

10 km Loop | 120 Minutes by foot | 60 Minutes by bike

[VIEW WEBSITE NOW](#)





ENQUIRE NOW

Tom Chester
Property Manager
M. 022 014 0865
Tom.Chester@goodman.com

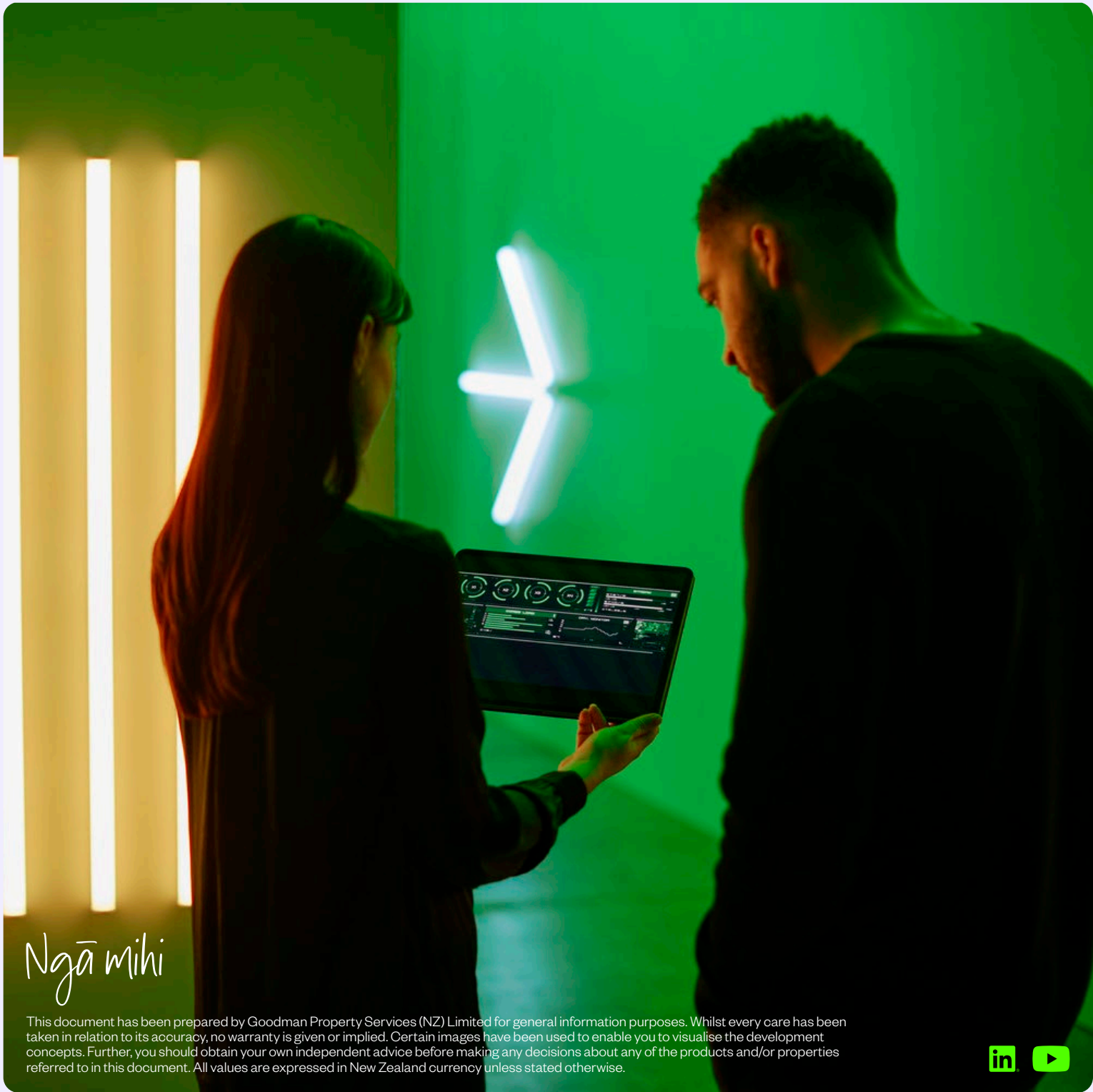
Thomas Papesch
Asset Manager
M. 021 033 4267
Thomas.Papesch@goodman.com

Goodman Property Services (NZ) Limited
Level 8, Beca House, 124 Halsey Street,
Wynyard Quarter, Auckland 1010
PO Box 90940
Victoria Street West, Auckland 1142
T. 0800 375 6060

[VIEW OUR PROPERTIES ONLINE](#)



Goodman is proudly Toitū carbonzero certified. The accreditation is internationally recognised, giving customers and stakeholders confidence that the business is measuring, reducing, and offsetting its carbon emissions.



Ngā mihi

This document has been prepared by Goodman Property Services (NZ) Limited for general information purposes. Whilst every care has been taken in relation to its accuracy, no warranty is given or implied. Certain images have been used to enable you to visualise the development concepts. Further, you should obtain your own independent advice before making any decisions about any of the products and/or properties referred to in this document. All values are expressed in New Zealand currency unless stated otherwise.

