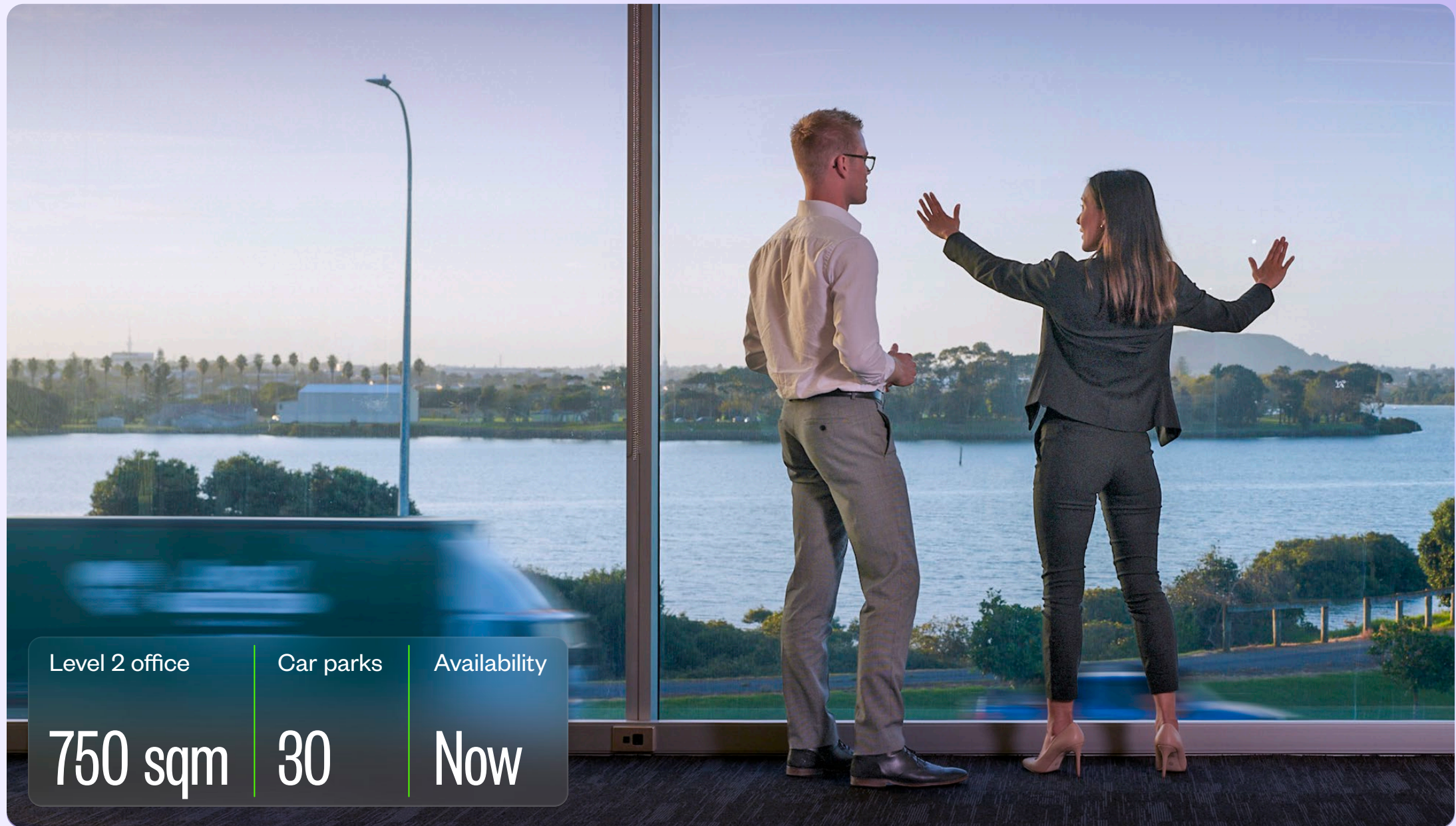


New Zealand Steel House, 86 Highbrook Drive

HIGHBROOK



OFFICE



Level 2 office

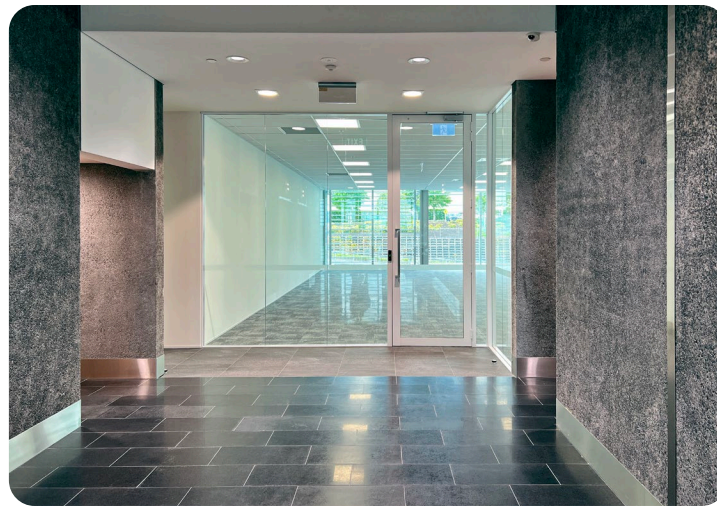
Car parks

Availability

750 sqm

30

Now



New Zealand Steel House, 86 Highbrook Drive

KEY FEATURES

New Zealand Steel House offers high-quality office space situated in Highbrook Business Park and located 700 m from the Highbrook Crossing amenities. Including cafés, restaurants, gym and accommodation.

Gateway to Highbrook Business Park

Excellent signage opportunities

Well located in close proximity to SH1

Surrounded by blue chip multi-national businesses such as Panasonic, Officemax, FedEx and Ford.

5.5 Star NABERSNZ rating

[VIEW NABERSNZ CASE STUDY](#)



STRATEGIC LOCATION

Located in East Tāmaki, just off the Southern Motorway, Highbrook Business Park is easily accessible from any direction. Its clearly marked road system makes navigation within the park simple. Highbrook Drive boasts a high profile with over 30,000 commuters every day. Highbrook Crossing, the hub of Highbrook, offers ample car parking, bus stops, cafés, restaurants, a gym, and childcare facilities.



To CBD



SITE PLAN

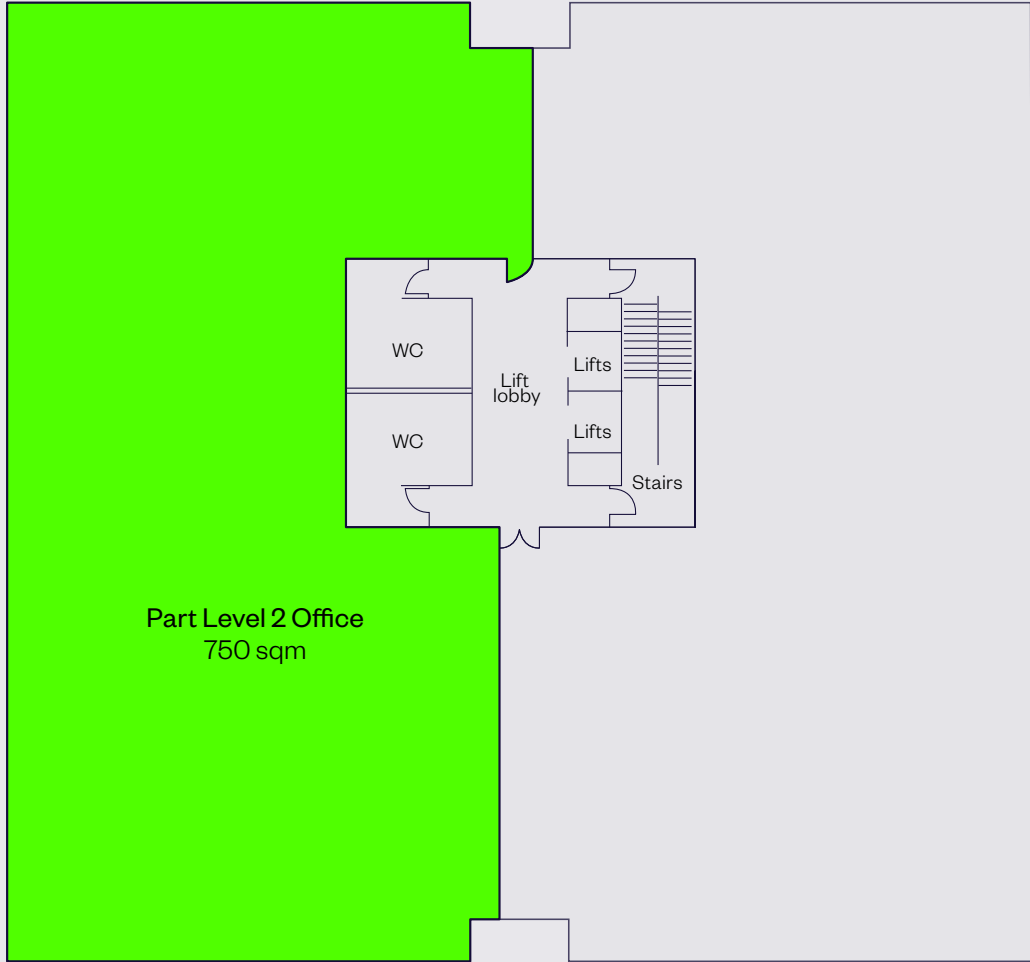
Level 2 office **750 sqm**

Car parks **Available**

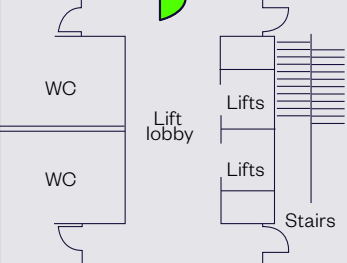
Address

Level 2, New Zealand Steel House,
86 Highbrook Drive,
East Tāmaki, Auckland

Highbrook Drive



Part Level 2 Office
750 sqm



KEY INFRASTRUCTURE HIGHBROOK BUSINESS PARK



AUCKLAND AIRPORT

MANGERE



SH20



TRAIN



SH1



WIRI INLAND PORT

MANUKAU



METRO PORT

OTARA

NEW LYNN

MT ROSKILL

ONEHUNGA

GREENLANE

MT WELLINGTON



AUCKLAND CBD



PORTS OF AUCKLAND

HIGHBROOK BUSINESS PARK

Key Features



1km to SH1



5km to Botany Town Centre



16km to Airport



18km to CBD

TAKANINI

HIGHBROOK BUSINESS PARK



A world class business park.

Over 140 businesses and 6,000 people.



HIGHBROOK BUSINESS PARK LOCAL AMENITIES

Highbrook Crossing — a focal point for a growing community.



Banks & professional services

- + Kiwibank Business Banking
- + Wynyard Wood
Lawyers & Notaries
- + RSM Accountants
- + Colliers
- + Barfoot & Thompson
- + Public Trust
- + EarnLearn
- + BSM Group Architects
- + BNZ Partners
- + BDO — Auckland
- + Forsyth Barr Investment
Advisors
- + Professional Building
Consultants
- + APD Global
- + Co\working Highbrook

Accommodation

- + Quest Highbrook
Serviced Apartments
providing 120 rooms

Highbrook Parklands

Beautiful parklands with 8 km cycle, running, walking track and stunning coastal views over the Tamaki River.

Childcare

- + Active Explorers' Childcare

Fitness

- + Jetts 24-hour Fitness

Convenience retail

- + Z Service Station
- + Highbrook Superette

Cafés and restaurants

- + Subway
- + Hollywood Bakery Espresso
- + Kagura Sushi Donburi Bánh Mi
- + Namaste Indian Restaurant
& Bar
- + Olea Café & Eatery
- + Tuck Shop
- + The Banker — coming soon

Car parking

- + Highbrook Crossing has 90 minutes free parking pay by plate car parks and temporary short term parks
- + A multi-level car park providing 343 spaces

Zilch car hire parking

- + Zilch is a car sharing service that offers on demand, zero-emissions EVs for hire by the hour, day or weekend.

EV Charging

- + Two ChargeNet fast chargers, providing 3x CCS and 1x CHAdeMO, are located in the 90 minute free car park on Tūhana Lane.

Medical

Highbrook Medical Hub provides doctors, pharmacy, clinical psychologists, dentists and physiotherapists.

They also have a mobile consult van with a clinical team that can come to your office and perform health checks with your team. Very handy for everyone at Highbrook to visit.



HIGHBROOK PUBLIC TRANSPORT

The convenient location is well serviced by bus and train.

Buses

There are several bus stops close to and from Highbrook Drive:

- + **031** Māngere Town Centre, Papatoetoe Hunters Corner, Otara, Botany.
- + **070** Ellerslie, Newmarket, Botany, Pakuranga, Panmure, City.
- + **351** Botany, Highbrook, Ōtāhuhu Town Centre, Ōtāhuhu Station. (Monday to Friday only)
- + **352** Panmure, Highbrook, East Tāmaki, Manukau.
- + **353** Manukau, Preston Rd, Springs Rd, Harris Rd, Botany Town Centre.

Trains

The Eastern and Southern line trains are available at Ōtāhuhu train station, located 2 km away from Highbrook Business Park. Only a 30 minute ride on bus line **351**.



HIGHBROOK WALKING & BIKING TRACKS



P Street and public car parks shown

P EV charger station

H Hivebrook: Honeybee hives

N Ngahere: Native plantings and rest area

Dogs must be on-leash and are not permitted in foreshore areas.



Highbrook North Shared Path
Starts at 55 Waiouru Road

Enjoy great views across to Maungarei (Mt Wellington) and Maungakiekie (One Tree Hill). There are plenty of spots (including seating areas) along the way to catch your breath and admire the view.

11 km Return | **110** Minutes by foot | **55** Minutes by bike

Highbrook South Shared Path
Starts at 12 Pukekiwiriki Place

Easily manageable on foot or bike, perfect for a peaceful spot of lunchtime exercise. Extend your ride or walk by joining up with the Highbrook Path on the other side of Highbrook Drive.

5 km Return | **60** Minutes by foot | **30** Minutes by bike

Highbrook loop

Start anywhere on the loop or start and finish at the cafés at Highbrook Crossing, 60 Highbrook Drive.

8 km of the loop path is on the parklands and 2 km along the street footpaths.

10 km Loop | **120** Minutes by foot | **60** Minutes by bike

[VIEW WEBSITE NOW](#)



ENQUIRE NOW

Tom Chester
Property Manager
M. 022 014 0865
Tom.Chester@goodman.com

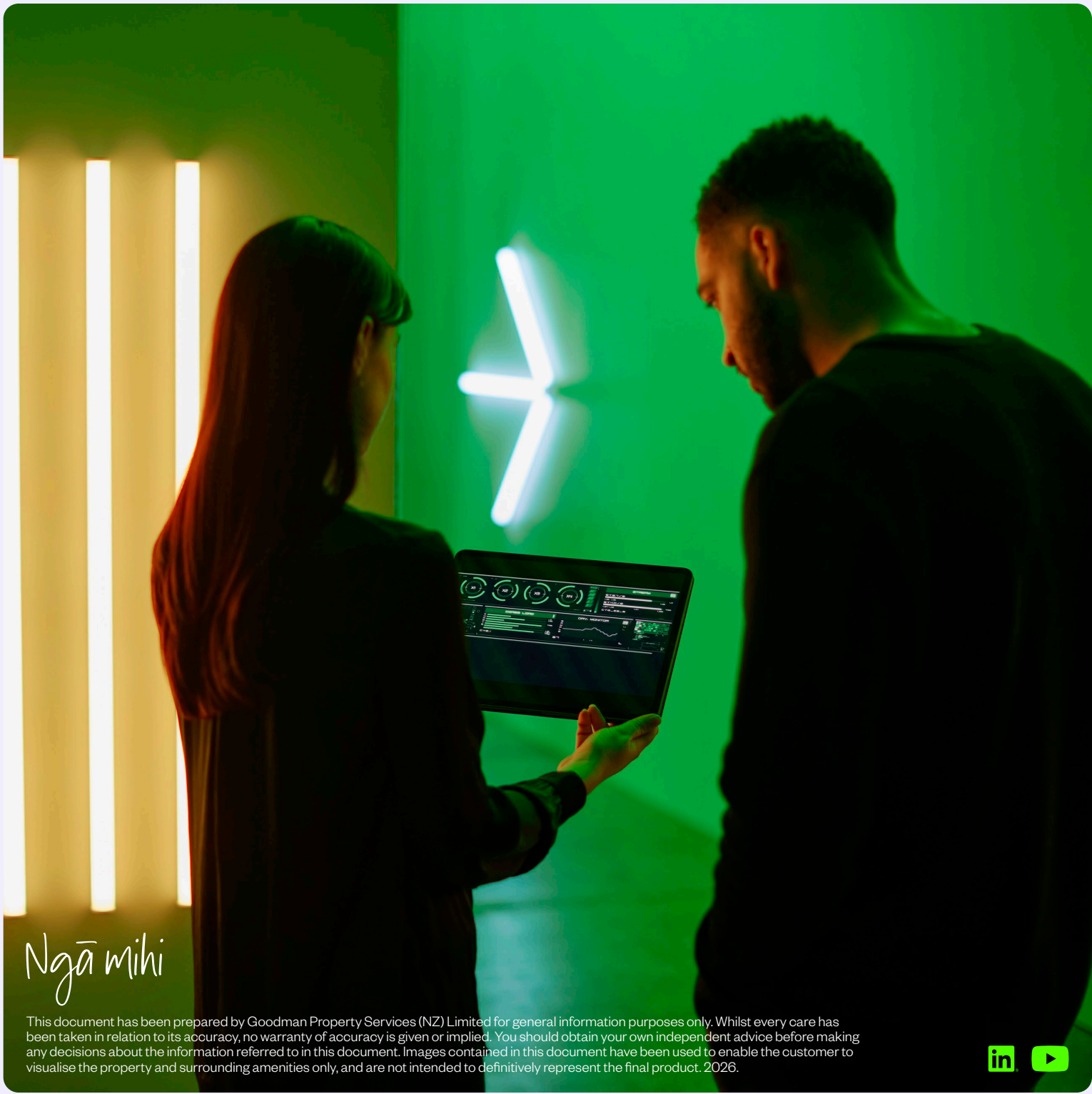
Thomas Papesch
Asset Manager
M. 021 033 4267
Thomas.Papesch@goodman.com

Goodman Property Services (NZ) Limited
Level 8, Beca House, 124 Halsey Street,
Wynyard Quarter, Auckland 1010
PO Box 90940
Victoria Street West, Auckland 1142
T. 0800 375 6060

[VIEW OUR PROPERTIES ONLINE](#)



Goodman is proudly Toitū carbonzero certified. The accreditation is internationally recognised, giving customers and stakeholders confidence that the business is measuring, reducing, and offsetting its carbon emissions.



Ngā mihi

This document has been prepared by Goodman Property Services (NZ) Limited for general information purposes only. Whilst every care has been taken in relation to its accuracy, no warranty of accuracy is given or implied. You should obtain your own independent advice before making any decisions about the information referred to in this document. Images contained in this document have been used to enable the customer to visualise the property and surrounding amenities only, and are not intended to definitively represent the final product. 2026.

