

Colliers House, 52 Highbrook Drive

HIGHBROOK



# OFFICE



Ground Floor office

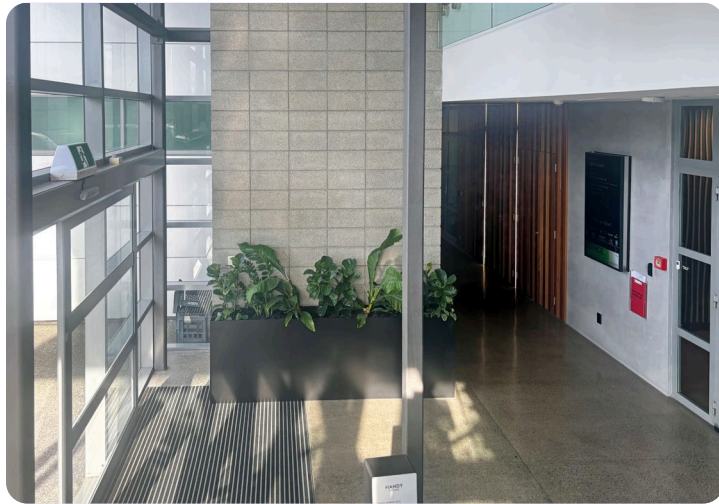
Car parks

Availability

187 sqm

6

Now



## Colliers House, 52 Highbrook Drive

# KEY FEATURES

High quality office, situated in Highbrook Business Park and surrounded by all the Highbrook Crossing amenities. Including cafés, restaurants, gym and accommodation.

---

5 Star NABERSNZ rating

---

Car parks available

---

Fitout provided including modern kitchen and two meeting rooms

---

Surrounded by Colliers, Kiwibank, Open Country Dairy and Forsyth Barr.

---



[VIEW NABERSNZ CASE STUDY](#)



# STRATEGIC LOCATION

Located in East Tāmaki, just off the Southern Motorway, Highbrook Business Park is easily accessible from any direction. Its clearly marked road system makes navigation within the park simple. Highbrook Drive boasts a high profile with over 30,000 commuters every day. Highbrook Crossing, the hub of Highbrook, offers ample car parking, bus stops, cafés, restaurants, a gym, and childcare facilities.

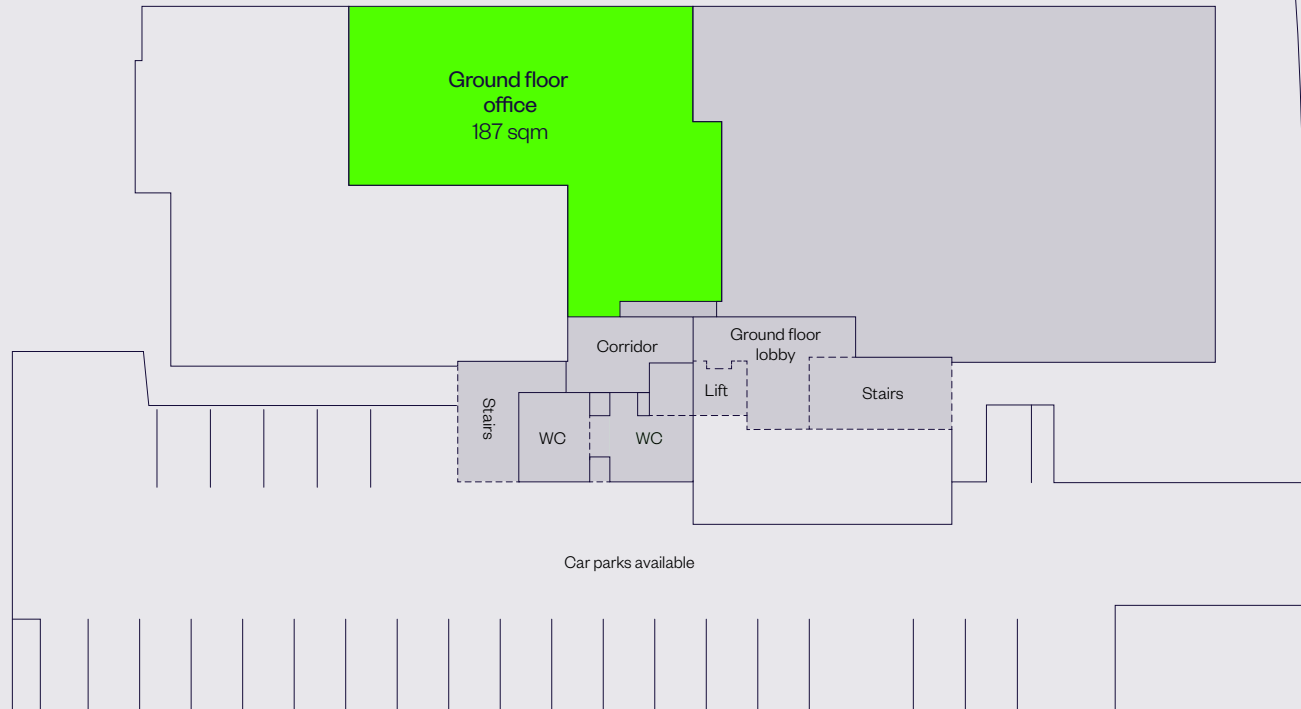


# PROPOSED LAYOUT

Ground Floor office	187 sqm
Car parks	6

## Address

Ground Floor, Colliers House,  
52 Highbrook Drive,  
East Tāmaki, Auckland



Highbrook Drive

# KEY INFRASTRUCTURE HIGHBROOK BUSINESS PARK



AUCKLAND AIRPORT



WIRI INLAND PORT



SH20



TRAIN



SH1



METRO PORT



AUCKLAND CBD



PORTS OF AUCKLAND

HIGHBROOK BUSINESS PARK

## Key Features



1km to SH1



5km to Botany Town Centre



16km to Airport



18km to CBD

# HIGHBROOK BUSINESS PARK



A world class business park.

Over 140 businesses and 6,000 people.



# HIGHBROOK BUSINESS PARK LOCAL AMENITIES

Highbrook Crossing — a focal point for a growing community.

## **Banks & professional services**

- + Kiwibank Business Banking
- + Wynyard Wood  
Lawyers & Notaries
- + RSM Accountants
- + Colliers
- + Barfoot & Thompson
- + Public Trust
- + EarnLearn
- + BSM Group Architects
- + BNZ Partners
- + BDO — Auckland
- + Forsyth Barr Investment  
Advisors
- + Professional Building  
Consultants
- + APD Global
- + Co\working Highbrook

## **Accommodation**

- + Quest Highbrook  
Serviced Apartments  
providing 120 rooms

## **Highbrook Parklands**

Beautiful parklands with 8 km cycle, running, walking track and stunning coastal views over the Tāmaki River.

## **Childcare**

- + Active Explorers' Childcare

## **Fitness**

- + Jetts 24-hour Fitness

## **Convenience retail**

- + Z Service Station
- + Highbrook Superette

## **Cafés and restaurants**

- + Subway
- + Hollywood Bakery Espresso
- + Kagura Sushi Donburi Bánh Mi
- + Namaste Indian Restaurant  
& Bar
- + Olea Café & Eatery
- + Tuck Shop
- + The Banker — coming soon

## **Car parking**

- + Highbrook Crossing has  
90 minutes free parking  
pay by plate car parks and  
temporary short term parks
- + A multi-level car park  
providing 343 spaces

## **Zilch car hire parking**

- + Zilch is a car sharing service  
that offers on demand, zero-  
emissions EVs for hire by the  
hour, day or weekend.

## **EV Charging**

- + Two ChargeNet fast chargers,  
providing 3x CCS and 1x  
CHAdeMO, are located in the  
90 minute free car park on  
Tūhana Lane.

## **Medical**

Highbrook Medical Hub provides doctors, pharmacy, clinical psychologists, dentists and physiotherapists.

They also have a mobile consult van with a clinical team that can come to your office and perform health checks with your team. Very handy for everyone at Highbrook to visit.



# HIGHBROOK PUBLIC TRANSPORT

The convenient location is well serviced by bus and train.

### Buses

There are several bus stops close to and from Highbrook Drive:

- + **031** Māngere Town Centre, Papatoetoe Hunters Corner, Otara, Botany.
- + **070** Ellerslie, Newmarket, Botany, Pakuranga, Panmure, City.
- + **351** Botany, Highbrook, Ōtāhuhu Town Centre, Ōtāhuhu Station. (Monday to Friday only)
- + **352** Panmure, Highbrook, East Tāmaki, Manukau.
- + **353** Manukau, Preston Rd, Springs Rd, Harris Rd, Botany Town Centre.

### Trains

The Eastern and Southern line trains are available at Ōtāhuhu train station, located 2 km away from Highbrook Business Park. Only a 30 minute ride on bus line **351**.



# HIGHBROOK WALKING & BIKING TRACKS



**P** Street and public car parks shown

**P** EV charger station

**H** Hivebrook: Honeybee hives

**N** Ngahere: Native plantings and rest area

Dogs must be on-leash and are not permitted in foreshore areas.



## Highbrook North Shared Path

Starts at 55 Waiouru Road

Enjoy great views across to Maungarei (Mt Wellington) and Maungakiekie (One Tree Hill). There are plenty of spots (including seating areas) along the way to catch your breath and admire the view.

11 km Return | 110 Minutes by foot | 55 Minutes by bike

## Highbrook South Shared Path

Starts at 12 Pukekiwiriki Place

Easily manageable on foot or bike, perfect for a peaceful spot of lunchtime exercise. Extend your ride or walk by joining up with the Highbrook Path on the other side of Highbrook Drive.

5 km Return | 60 Minutes by foot | 30 Minutes by bike

## Highbrook loop

Start anywhere on the loop or start and finish at the cafés at Highbrook Crossing, 60 Highbrook Drive.

8 km of the loop path is on the parklands and 2 km along the street footpaths.

10 km Loop | 120 Minutes by foot | 60 Minutes by bike

[VIEW WEBSITE NOW](#)





# ENQUIRE NOW

**Tom Chester**  
Property Manager  
M. 022 014 0865  
Tom.Chester@goodman.com

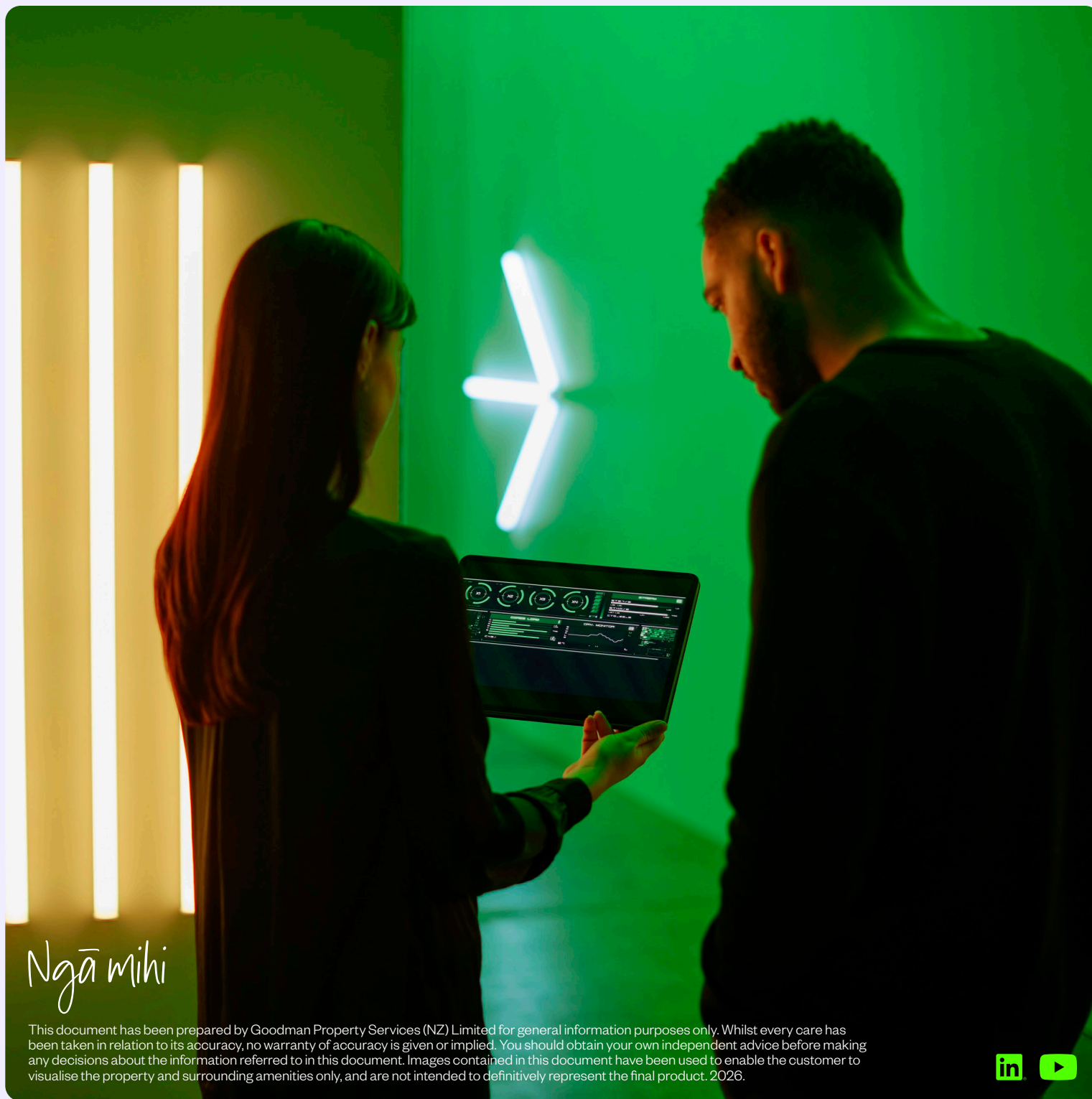
**Thomas Papesch**  
Asset Manager  
M. 021 033 4267  
Thomas.Papesch@goodman.com

Goodman Property Services (NZ) Limited  
Level 8, Beca House, 124 Halsey Street,  
Wynyard Quarter, Auckland 1010  
PO Box 90940  
Victoria Street West, Auckland 1142  
T. 0800 375 6060

[VIEW OUR PROPERTIES ONLINE](#)



Goodman is proudly Toitū carbonzero certified. The accreditation is internationally recognised, giving customers and stakeholders confidence that the business is measuring, reducing, and offsetting its carbon emissions.



*Ngā mihi*

This document has been prepared by Goodman Property Services (NZ) Limited for general information purposes only. Whilst every care has been taken in relation to its accuracy, no warranty of accuracy is given or implied. You should obtain your own independent advice before making any decisions about the information referred to in this document. Images contained in this document have been used to enable the customer to visualise the property and surrounding amenities only, and are not intended to definitively represent the final product. 2026.

