

21 El Kobar Drive

WAREHOUSE + OFFICE/SHOWROOM



Office/showroom

1,521 sqm

Warehouse

4,473 sqm

Canopy

772 sqm

Yard

710 sqm

Warehouse office

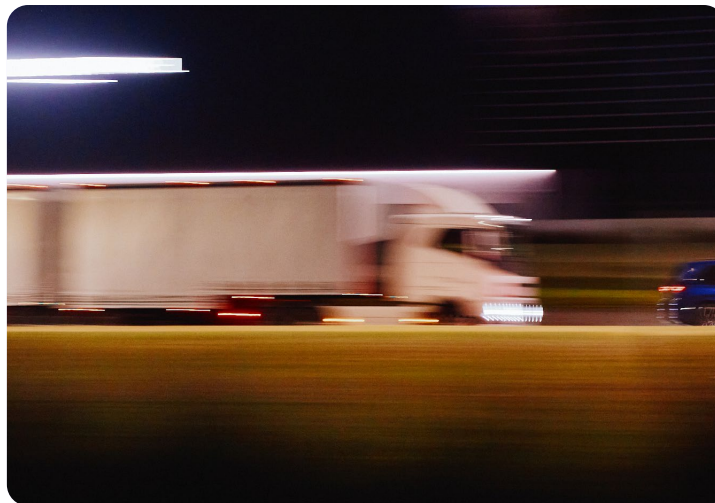
80 sqm

Car parks

82

Availability

April 2026



21 El Kobar Drive

KEY FEATURES

Situated on the prominent corner of El Kobar Drive and Business Parade South. Surrounded by warehouse and distribution businesses including Officemax, Panasonic, Stanley Black & Decker and NZ Post.

Secured yard

Great access to Highbrook Drive and State Highway 1

9.3m high stud

STRATEGIC LOCATION

Located in East Tāmaki, just off the Southern Motorway, Highbrook Business Park is easily accessible from any direction. Its clearly marked road system makes navigation within the park simple. Highbrook Drive boasts a high profile with over 30,000 commuters every day. Highbrook Crossing, the hub of Highbrook, offers ample car parking, bus stops, cafés, restaurants, a gym, and childcare facilities.

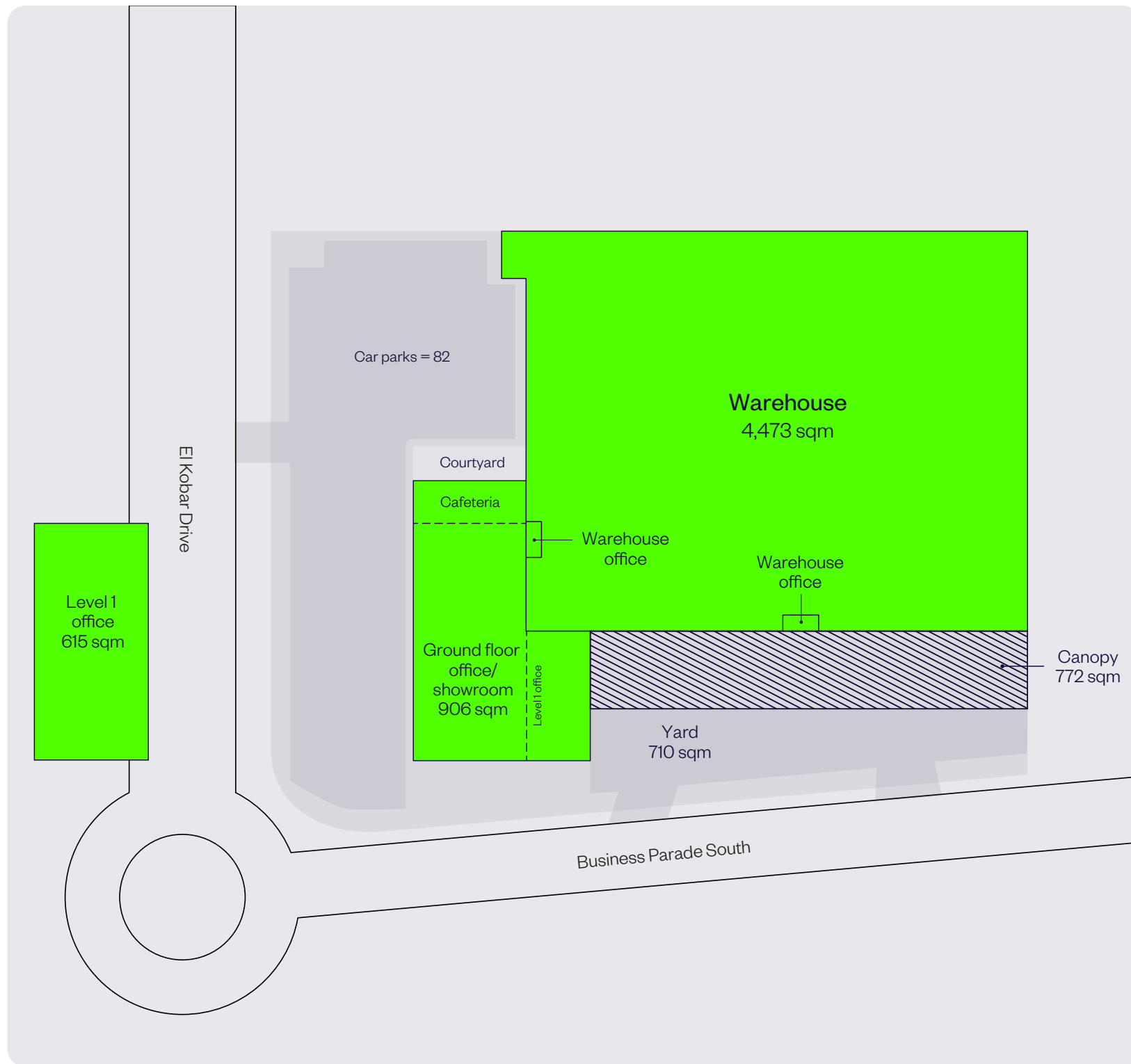


SITE PLAN

Office/showroom	1,521 sqm
Warehouse	4,473 sqm
Canopy	772 sqm
Warehouse office	80 sqm
Yard	710 sqm
Car parks on grade	82

Address

21 El Kobar Drive,
East Tāmaki, Auckland



KEY INFRASTRUCTURE

HIGHBROOK BUSINESS PARK



Key Features



1km to SH1



5km to Botany
Town Centre



16km to Airport



18km to CBD

HIGHBROOK BUSINESS PARK

DRIVE TIME REACH

Data taken from
60 Highbrook Drive
as at 27 March 2025.

10 MIN DRIVE TIME REACH




90,000
POPULATION




3.1bn
PURCHASING POWER

20 MIN DRIVE TIME REACH



570,000
POPULATION



23.4bn
PURCHASING POWER

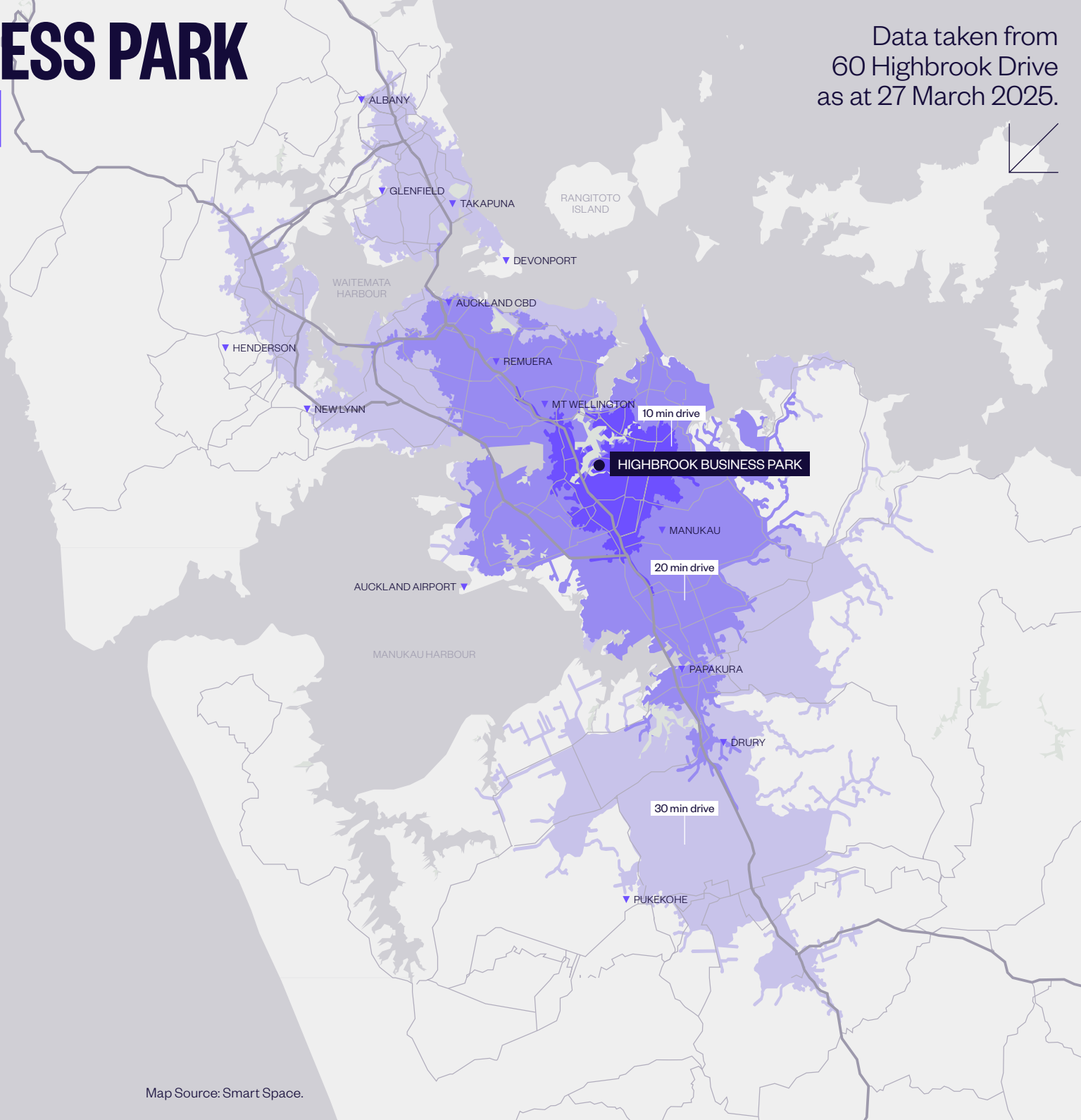
30 MIN DRIVE TIME REACH



1.0m
POPULATION



45.4bn
PURCHASING POWER



* Purchasing Power describes the disposable income (income without taxes and social security contributions, including received transfer payments) of a certain area's population. The figures are in New Zealand Dollars (NZD). Population is rounded to the nearest 10,000. Source: Michael Bauer Research 2021. Drive times are taken at 12pm. Source: Esri. These statistics are provided as an indicative guide and while care has been taken in relation to accuracy, no warranty is given or implied.

HIGHBROOK BUSINESS PARK



A world class business park.

Over 140 businesses and 6,000 people.



HIGHBROOK PUBLIC TRANSPORT

The convenient location is well serviced by bus and train.

Buses

There are several bus stops close to and from Highbrook Drive:

- + **031** Māngere Town Centre, Papatoetoe Hunters Corner, Otara, Botany.
- + **070** Ellerslie, Newmarket, Botany, Pakuranga, Panmure, City.
- + **351** Botany, Highbrook, Ōtāhuhu Town Centre, Ōtāhuhu Station. (Monday to Friday only)
- + **352** Panmure, Highbrook, East Tāmaki, Manukau.
- + **353** Manukau, Preston Rd, Springs Rd, Harris Rd, Botany Town Centre.

Trains

The Eastern and Southern line trains are available at Ōtāhuhu train station, located 2 km away from Highbrook Business Park. Only a 30 minute ride on bus line **351**.





HIGHBROOK BUSINESS PARK LOCAL AMENITIES

Highbrook Crossing — a focal point for a growing community.



Banks & professional services

- + Kiwibank Business Banking
- + Wynyard Wood
Lawyers & Notaries
- + RSM Accountants
- + Colliers
- + Barfoot & Thompson
- + Public Trust
- + EarnLearn
- + BSM Group Architects
- + BNZ Partners
- + BDO — Auckland
- + Forsyth Barr Investment
Advisors
- + Professional Building
Consultants
- + APD Global
- + Co\working Highbrook

Accommodation

- + Quest Highbrook
Serviced Apartments
providing 120 rooms

Highbrook Parklands

Beautiful parklands with 8 km cycle, running, walking track and stunning coastal views over the Tāmaki River.

Childcare

- + Active Explorers' Childcare

Fitness

- + Jetts 24-hour Fitness

Convenience retail

- + Z Service Station
- + Highbrook Superette

Cafés and restaurants

- + Subway
- + Hollywood Bakery Espresso
- + Kagura Sushi Donburi Bánh Mì
- + Namaste Indian Restaurant
& Bar
- + Olea Café & Eatery
- + Tuck Shop
- + The Banker — coming soon

Car parking

- + Highbrook Crossing has 90 minutes free parking pay by plate car parks and temporary short term parks
- + A multi-level car park providing 343 spaces

Zilch car hire parking

- + Zilch is a car sharing service that offers on demand, zero-emissions EVs for hire by the hour, day or weekend.

EV Charging

- + Two ChargeNet fast chargers, providing 3x CCS and 1x CHAdeMO, are located in the 90 minute free car park on Tūhana Lane.

Medical

Highbrook Medical Hub provides doctors, pharmacy, clinical psychologists, dentists and physiotherapists.

They also have a mobile consult van with a clinical team that can come to your office and perform health checks with your team. Very handy for everyone at Highbrook to visit.

HIGHBROOK WALKING & BIKING TRACKS



Street and public car parks shown

EV charger station

Hivebrook: Honeybee hives

Ngahere: Native plantings and rest area

Dogs must be on-leash and are not permitted in foreshore areas.





ENQUIRE NOW

Tom Chester
Property Manager
M.022 014 0865
Tom.Chester@goodman.com

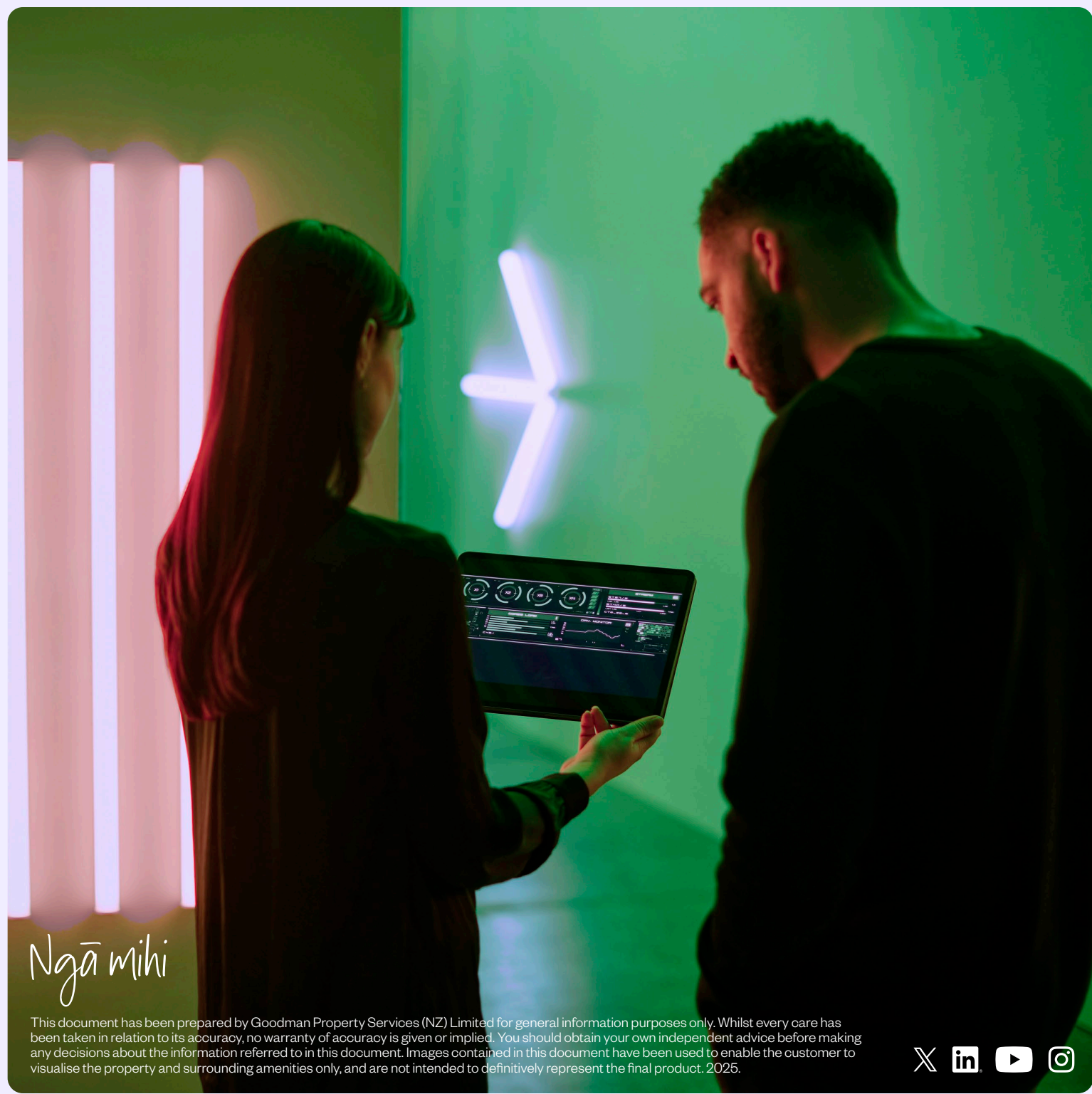
Thomas Papesch
Asset Manager
M.021 033 4267
Thomas.Papesch@goodman.com

Goodman Property Services (NZ) Limited
Level 8, Beca House, 124 Halsey Street,
Wynyard Quarter, Auckland 1010
PO Box 90940
Victoria Street West, Auckland 1142
T. 0800 375 6060

[VIEW OUR PROPERTIES ONLINE](#) ➔



Goodman is proudly Toitū carbonzero certified. The accreditation is internationally recognised, giving customers and stakeholders confidence that the business is measuring, reducing, and offsetting its carbon emissions.



Ngā mihi

This document has been prepared by Goodman Property Services (NZ) Limited for general information purposes only. Whilst every care has been taken in relation to its accuracy, no warranty of accuracy is given or implied. You should obtain your own independent advice before making any decisions about the information referred to in this document. Images contained in this document have been used to enable the customer to visualise the property and surrounding amenities only, and are not intended to definitively represent the final product. 2025.

