



# HIGHBROOK

A world class business park



# Join the success story

A meticulously planned business park incorporating logistics and warehousing, with a central hub offering retail amenities and commercial services, all just 18km from Auckland's CBD. Featuring unprecedented scale, landscaping, and unique characteristics, Highbrook invites you to join the success story.





# 6,000 people and growing

Highbrook brings people and industry together, making it more than just a workplace.





# Home to global and NZ companies





# Over 140 businesses across 109 ha





## Awards and Green Star ratings

Customers' requirements for long-term savings and future proofing, enables Goodman to develop leading-edge industrial buildings with a focus on sustainability, innovation and quality.

Highbrook has won over 15 awards including Excellence in Urban Land Development from the Property Council of NZ, and the Masterplan Design, Analysis and Planning Award from American Society of Landscape Architects.

[READ MORE HERE](#)



### Highbrook office-use buildings

All of Highbrook's commercial office-use buildings have achieved 5–6 Star NABERSNZ ratings\*.

[CASE STUDY](#)



### NZ Blood Service

6 Green Star Built and 6 Green Star Design rating\*\*.

[CASE STUDY](#)



### Tāwharau Lane Development

New Zealand's first-ever industrial 6 Green Star rating, 6 Green Star Built and 6 Green Star Design rating.

[CASE STUDY](#)



\* The NABERSNZ tool rates a building's energy efficiency.

\*\* Green Star – Design & As Built NZv1.0 Certified Design Review Rating

# World-leading design

**HIGHBROOK**





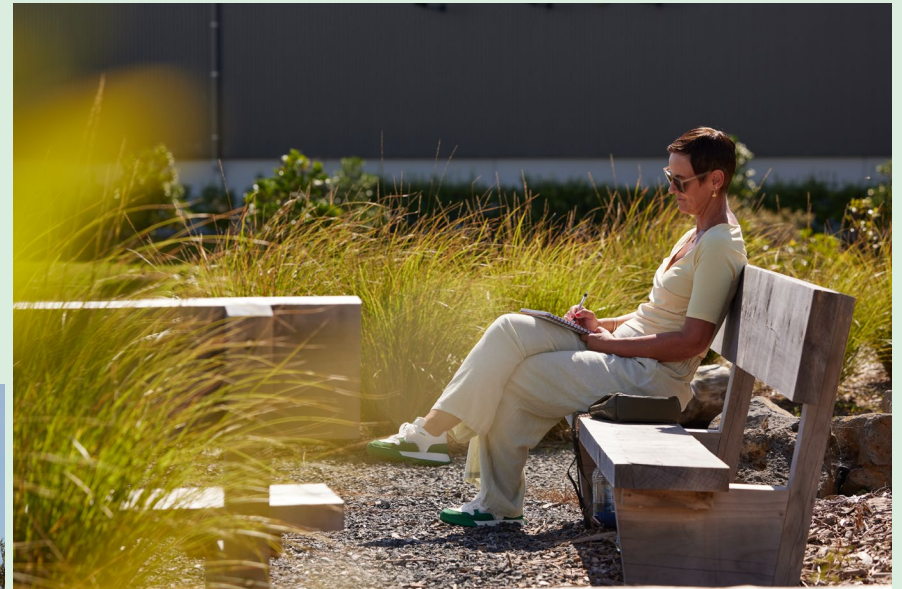
By 2026, Goodman aims to install electrical submeters across 100% of Highbrook, tracking energy consumption in key areas such as HVAC, lighting, and general power usage. The Goodman Energy Management (GEM) system provides real-time reports and insights, enabling informed decisions for long-term cost savings and improved energy efficiency.



## Sustainability building features



8 km of cycling and running tracks, providing space for exercise and relaxation. Biodiversity strategies, including beehives, pest control, and native plantings, enhance the ecosystem.

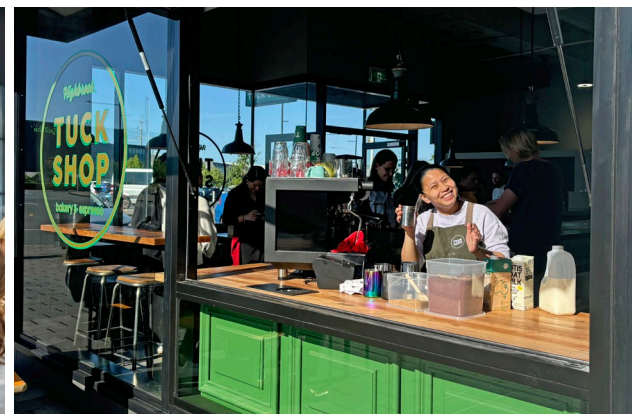


Surrounded by 40 ha  
of Highbrook parklands



# A vibrant community

Highbrook Park and Highbrook Crossing provide outdoor environments and meeting places. Sports, business and fundraising events showcase the support and sense of community at Highbrook.





# Amenities

Highbrook Crossing is the vibrant commercial hub of Highbrook, offering a variety of cafés and restaurants, professional services, accommodation, a gym, childcare facilities and ample car parking.



## PROFESSIONAL SERVICES

- Barfoot & Thompson
- BDO – Auckland
- BNZ Partners
- BSM Group Architects
- Colliers
- Forsyth Barr Investment Advisors
- Harcourts
- Kiwibank Business Hub
- Madison Recruitment
- Professional Building Consultants
- Public Trust
- RSM Accountants
- Te Pūkenga – EarnLearn
- Wright Recruitment
- Wynyard Wood Lawyers & Notaries
- CoWorking Highbrook

## CAFÉS AND RESTAURANTS

- Hollywood Bakery Espresso
- Kagura Sushi Donburi Bánh Mì
- Namaste Indian Restaurant & Bar
- Olea Café & Eatery
- Subway
- Tuck shop

## CONVENIENCE RETAIL

- Smile Supermarket Lotto
- Z Service Station

## CHILD CARE

- Active Explorers' Childcare

## ACCOMMODATION

- Quest Highbrook Serviced Apartments providing 120 rooms

## RECREATION

- Gym:** Jetts 24-hour Fitness
- Highbrook Parklands:** Beautiful parklands with 8 km cycle, running, walking track and stunning coastal views over the Tāmaki River

## EV CHARGING

- Two ChargeNet fast chargers are located in the 90 minute free car park on Tūhana Lane.
- Between the 2 chargers there are 3x CCS and 1x CHAdeMO cables, so 4 EVs could charge at one time.
- There is plenty of space for larger vans or small trucks too.

## PARKING AND PUBLIC TRANSPORT

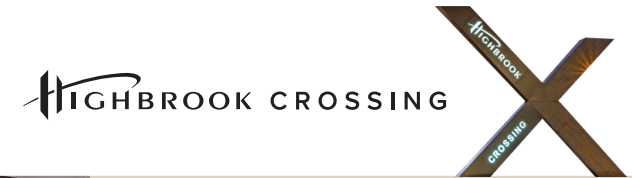
- 90 minute free parking for casual use. Fees apply for longer term use.
- Multi-level car park providing 343 spaces.

CAR PARK MAP AND BUS INFO





# Canopy and more amenity



## Exciting changes are underway

The redevelopment of the plaza area is progressing smoothly, with the curved concrete formwork for the new seating and planters completed as of the end of May.

Soon, you'll be able to enjoy a brand-new eatery, upgraded amenities, and modern office spaces on the ground floor of the Quest building. A striking greenhouse-style glass canopy will extend over a welcoming new entrance, creating a bright, sheltered space — perfect for lunch breaks or casual meetups.

Lush landscaping will provide a sense of privacy, while a variety of seating options will cater to both individuals and groups. With a vibrant mix of eateries and thoughtfully designed spaces, Highbrook Crossing is set to become a lively and inviting destination for all.



  
HIGHBROOK  
**Superette**

### Highbrook Superette coming July!

The new Highbrook Superette space will feature more shelving and refrigerated goods, offering a wider range of products.

Expect more fresh food and all your favourites, including Lotto.

< Artist Impression of new Highbrook Crossing entrance (far left), and the updated Superette (left).



Artist Impression of the greenhouse-style glass canopy



Artist Impression of the new restaurant at the entrance of Highbrook Crossing



Search Highbrook Business Park, East Tāmaki in google maps



# Close to key infrastructure and transport links

1 km  
SH1



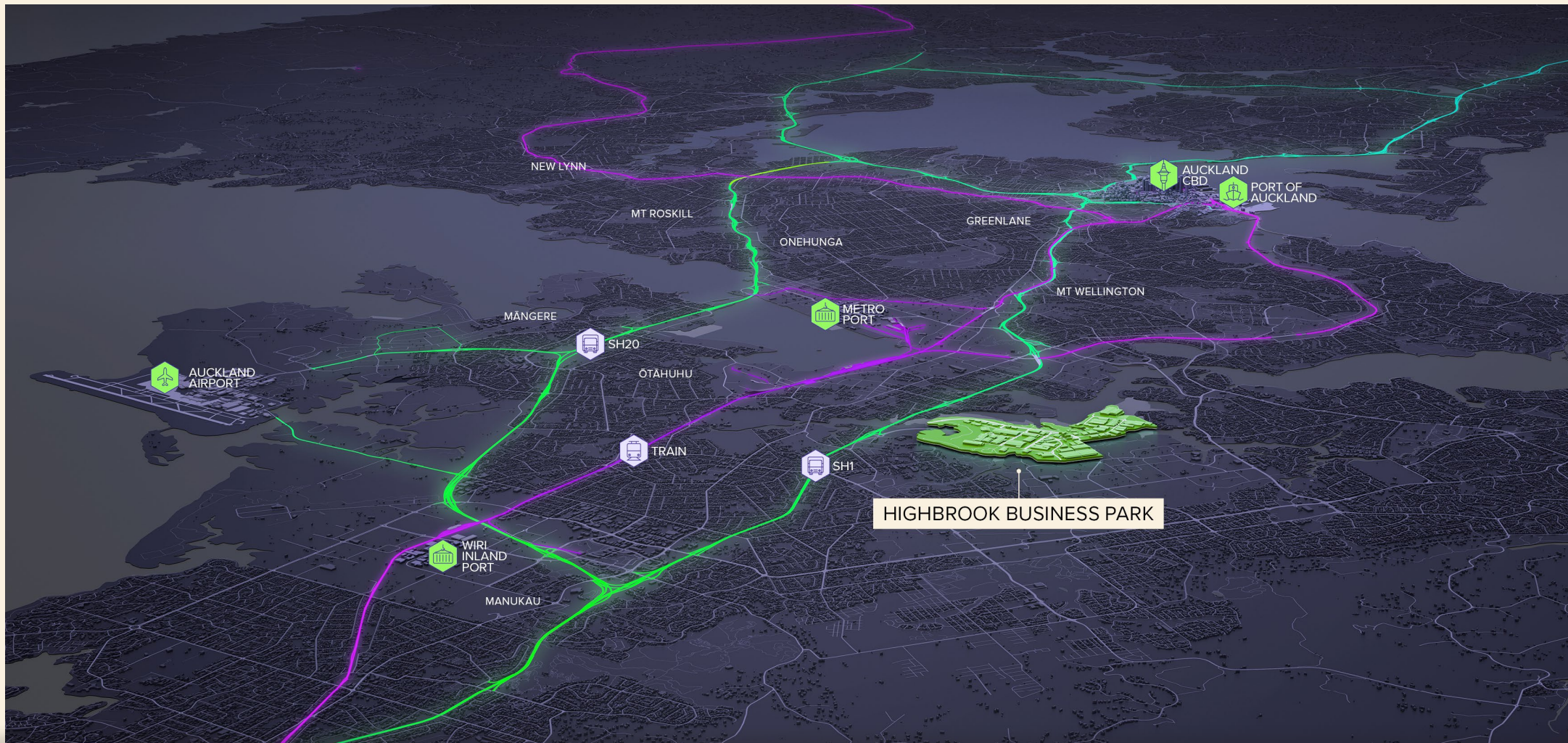
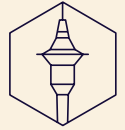
5 km  
Botany Downs



16 km  
Airport



18 km  
CBD





# Central to the wider Auckland for easy distribution and last mile delivery

## DRIVE TIME CATCHMENT

from 60 Highbrook Drive, as at 01 May 2024

### 10 min drive reach



**120,000**  
POPULATION



**3.9bn**  
PURCHASING POWER

### 20 min drive reach



**560,000**  
POPULATION



**20.4bn**  
PURCHASING POWER

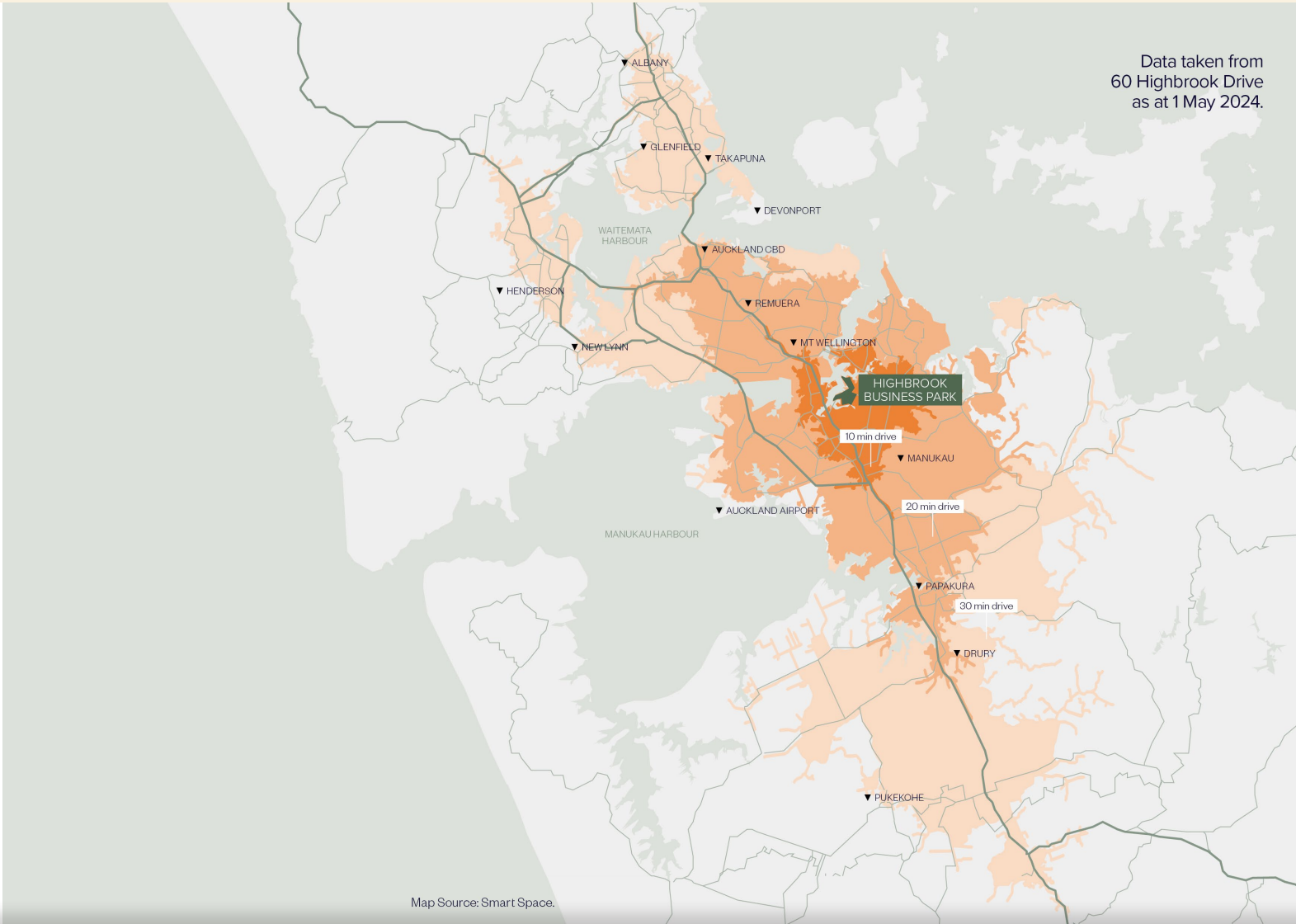
### 20 min drive reach



**960,000**  
POPULATION



**38.1bn**  
PURCHASING POWER



\* Purchasing Power describes the disposable income (income without taxes and social security contributions, including received transfer payments) of a certain area's population. The figures are in New Zealand Dollars (NZD). Population is rounded to the nearest 10,000. Source: Michael Bauer Research 2021. Drive times are reflective of off-peak traffic conditions. Source: Esri. These statistics are provided as an indicative guide and while care has been taken in relation to accuracy, no warranty is given or implied.



# Proven track record



Tāwharau Lane

[Read more →](#)



NZ Blood

[Read more →](#)



OfficeMax

[Read more →](#)



NZ Post

[Read more →](#)



Big Chill Supersite

[Read more →](#)

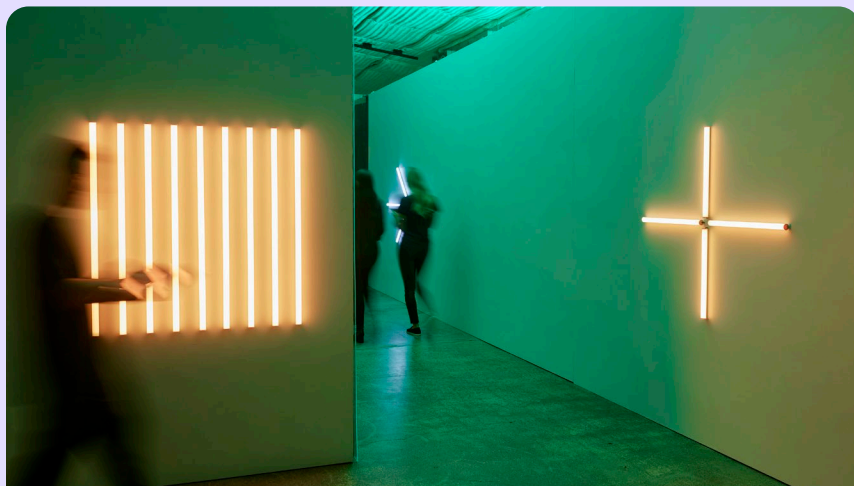


Ford

[Read more →](#)



# Goodman



## SERVICE+

We provide you with dedicated service 24/7.

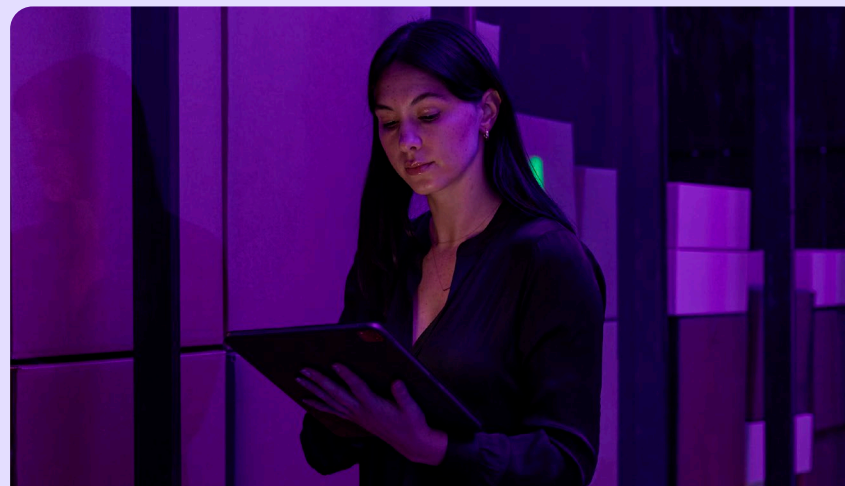
Every business within the Goodman property portfolio has a team of property professionals focused on delivering superior service.

Our team work closely with you to ensure your property is maintained and presented to the very highest standards.

Included in this support is the Goodman Service Desk and the Service+ online portal [SERVICEATGOODMAN.COM](https://SERVICEATGOODMAN.COM)

This will ensure a prompt response and allow you to track and review the progress of any job that has been lodged.

[View Service+ Guide](#)



## GEM

### Goodman Energy Management

As part of our commitment to reducing carbon emissions and improving operational efficiency, your building is equipped with the Goodman Energy Management system (GEM).

By accurately measuring energy consumption over time, GEM enables you to monitor and manage your usage, helping you to understand energy spikes and ultimately reduce your power use. Therefore you can optimise energy efficiency and reduce operating costs.

The scope of our metering follows Green Star Buildings NZ and NABERSNZ standards, covering key areas like HVAC, lighting, and power in both office and warehouse settings.

[Find out more](#)

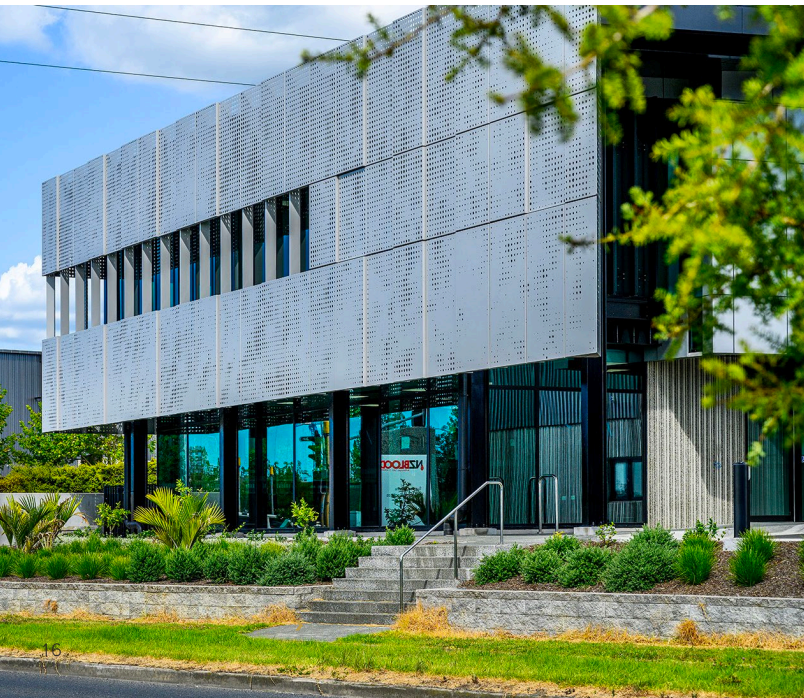


Goodman is the owner, developer and manager of Highbrook Business Park.

The team at Goodman provide Highbrook customers with the service and support to ensure their facilities are maintained and managed at the highest level.



# Gallery





# Gallery







WATCH THE  
HIGHBROOK  
VIDEO



Highbrook motorway interchange

# Ngā mihi

Highbrook.co.nz

## Highbrook Property Team

Evan Sanders  
General Manager, Property

▲ 021 826 462  
▲ Evan.Sanders@goodman.com

Robyn Barfoot  
Portfolio Manager

▲ 021 428 446  
▲ Robyn.Barfoot@goodman.com

Thomas Papesch  
Asset Manager

▲ 021 0334 267  
▲ Thomas.Papesch@goodman.com

Prarthana Wadhwani  
Property Manager

▲ 021 160 2883  
▲ Prarthana.Wadhwani@goodman.com

This document has been prepared by Goodman Property Services (NZ) Limited for general information purposes only. Whilst every care has been taken in relation to its accuracy, no warranty of accuracy is given or implied. You should obtain your own independent advice before making any decisions about the information referred to in this document. Images contained in this document have been used to enable the customer to visualise the property and surrounding amenities only, and are not intended to definitively represent the final product. All values are expressed in New Zealand currency unless otherwise stated. 2025.

HIGHBROOK

