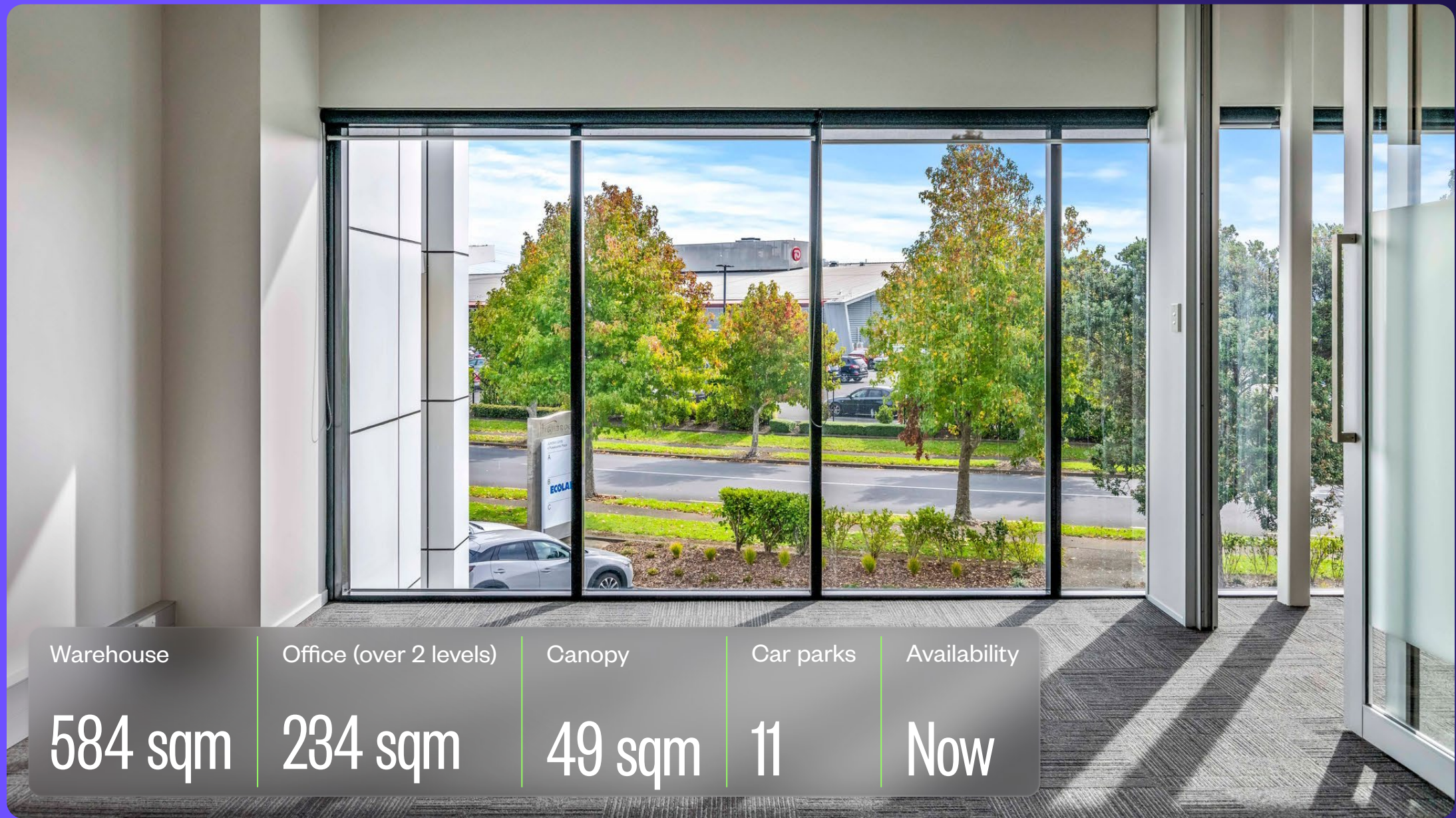


4C Pukekiwiriki Place

HIGHBROOK

Goodman

# WAREHOUSE + OFFICE



Warehouse

584 sqm

Office (over 2 levels)

234 sqm

Canopy

49 sqm

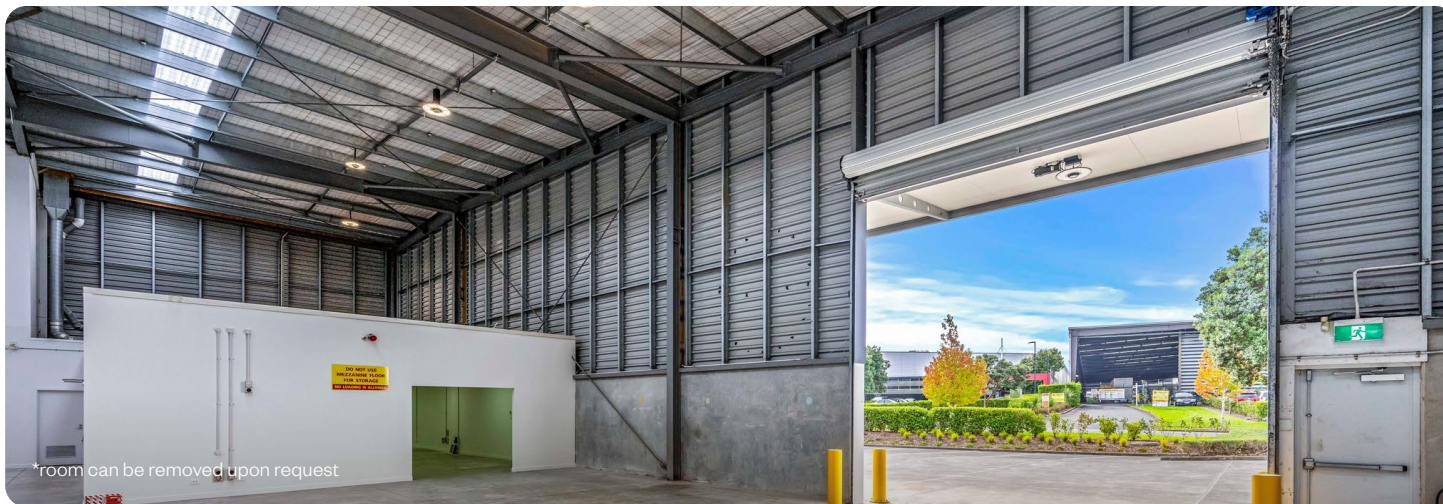
Car parks

11

Availability

Now





## 4C Pukekiwiriki Place **KEY FEATURES**

High quality unit space, situated in Highbrook Business Park and located 700m from the Highbrook Crossing amenities. Including cafés, restaurants, gym and accommodation.

---

7m stud height warehouse

---

Excellent signage opportunities

---

Container set down areas

---

Full office fitout

---

Surrounded by blue chip businesses such as DHL, NZ Post, BMW and ACCO

---





# STRATEGIC LOCATION

Located in East Tāmaki, just off the Southern Motorway, Highbrook Business Park is easily accessible from any direction. Its clearly marked road system makes navigation within the park simple. Highbrook Drive boasts a high profile with over 30,000 commuters every day. Highbrook Crossing, the hub of Highbrook, offers ample car parking, bus stops, cafés, restaurants, a gym, and childcare facilities.



Highbrook Drive

40 Pukekiwiri Place

Pukekiwiri Place

Business Parade South

Highbrook Crossing

Highbrook Drive

SH1 →

Business Parade North

Waouru Road



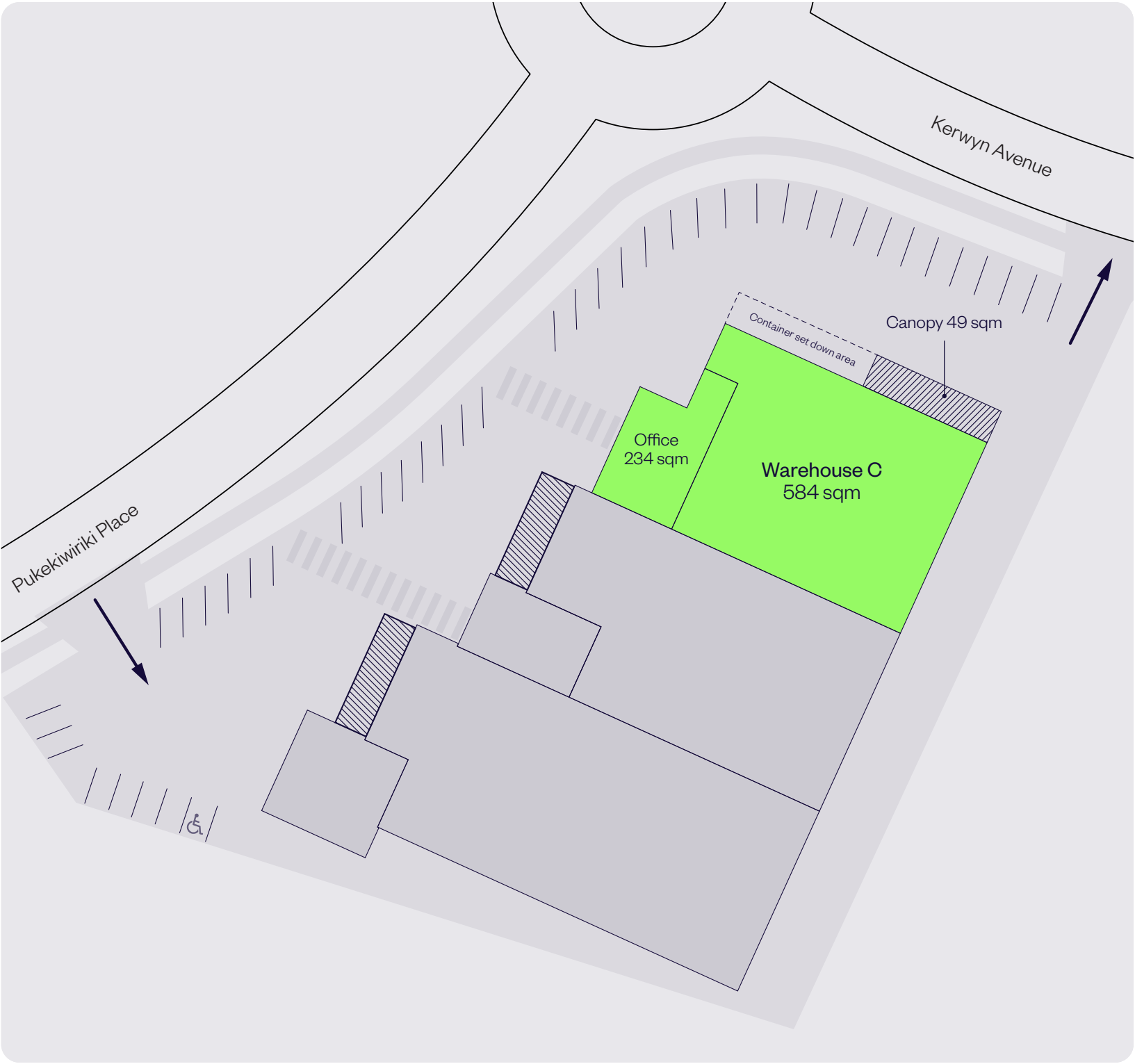


# SITE PLAN

Warehouse	584 sqm
Office	234 sqm
Canopy	49 sqm
Car parks	11

**Address**

4C Pukekiwiriki Place,  
East Tāmaki, Auckland





# KEY INFRASTRUCTURE

## HIGHBROOK BUSINESS PARK



### Key Features



1km to SH1



5km to Botany  
Town Centre



16km to Airport



18km to CBD



# HIGHBROOK BUSINESS PARK

## DRIVE TIME REACH

Data taken from  
60 Highbrook Drive  
as at 27 March 2025.

10 min drive reach



90,000  
POPULATION



3.1bn  
PURCHASING POWER

20 min drive reach



570,000  
POPULATION



23.4bn  
PURCHASING POWER

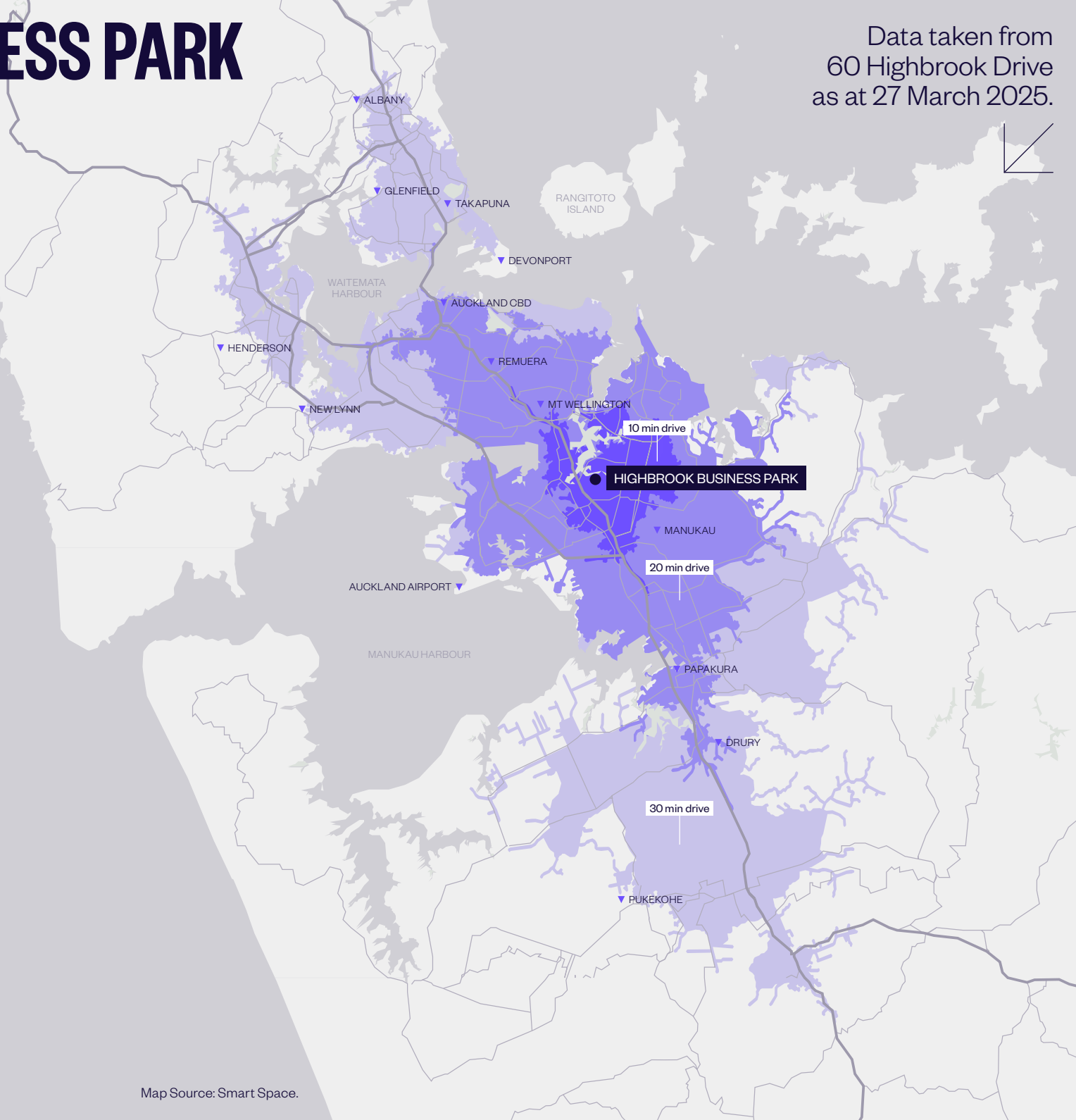
30 min drive reach



1,000,000  
POPULATION



45.4bn  
PURCHASING POWER



\* Purchasing Power describes the disposable income (income without taxes and social security contributions, including received transfer payments) of a certain area's population. The figures are in New Zealand Dollars (NZD). Population is rounded to the nearest 10,000. Source: Michael Bauer Research 2021. Drive times are taken at 12pm. Source: Esri. These statistics are provided as an indicative guide and while care has been taken in relation to accuracy, no warranty is given or implied.



# HIGHBROOK BUSINESS PARK



A world class business park.

Over 140 businesses and 6,000 people.





# HIGHBROOK PUBLIC TRANSPORT

The convenient location is well serviced by bus and train.

## Buses

There are several bus stops close to and from Highbrook Drive:

- + **031** Māngere Town Centre, Papatoetoe Hunters Corner, Otara, Botany.
- + **070** Ellerslie, Newmarket, Botany, Pakuranga, Panmure, City.
- + **351** Botany, Highbrook, Ōtāhuhu Town Centre, Ōtāhuhu Station. (Monday to Friday only)
- + **352** Panmure, Highbrook, East Tāmaki, Manukau.
- + **353** Manukau, Preston Rd, Springs Rd, Harris Rd, Botany Town Centre.

## Trains

The Eastern and Southern line trains are available at Ōtāhuhu train station, located 2 km away from Highbrook Business Park. Only a 30 minute ride on bus line **351**.







# HIGHBROOK BUSINESS PARK LOCAL AMENITIES

Highbrook Crossing — a focal point for a growing community.



## **Banks & professional services**

- + Kiwibank Business Banking
- + Wynyard Wood  
Lawyers & Notaries
- + RSM Accountants
- + Colliers
- + Barfoot & Thompson
- + Public Trust
- + Te Pūkenga – EarnLearn
- + BSM Group Architects
- + BNZ Partners
- + BDO – Auckland
- + Forsyth Barr Investment  
Advisors
- + Professional Building  
Consultants
- + Co\working Highbrook

## **Accommodation**

- + Quest Highbrook  
Serviced Apartments  
— providing 120 rooms

## **Fitness**

- + Jetts 24-hour Fitness

## **Highbrook Parklands**

Beautiful parklands with 8 km cycle, running, walking track and stunning coastal views over the Tāmaki River.

## **Childcare**

- + Active Explorers' Childcare

## **Cafés and restaurants**

- + Subway
- + Hollywood Bakery Espresso
- + Kagura Sushi Donburi Bánh Mì
- + Namaste Indian Restaurant  
& Bar
- + Olea Café & Eatery
- + Tuck Shop

## **Convenience retail**

- + Z Service Station
- + Smile Superette Lotto

## **Car parking**

- + Highbrook Crossing has 90 minutes free parking pay by plate car parks and temporary short term parks
- + A multi-level car park providing 343 spaces

## **EV Charging**

- + Two ChargeNet fast chargers are located in the 90min free car park on Tūhana Lane.
- + Between the 2 chargers there are 3x CCS and 1x CHAdeMO cables, so 4 EVs could charge at one time.
- + There is plenty of space for larger vans or small trucks too.

## **Medical**

Highbrook Medical Hub provides doctors, pharmacy, clinical psychologists, dentists and physiotherapists.

They also have a mobile consult van with a clinical team that can come to your office and perform health checks with your team. Very handy for everyone at Highbrook to visit.




# HIGHBROOK WALKING & BIKING TRACKS



 Street and public car parks shown

 EV charger station

 Hivebrook: Honeybee hives

 Ngahere: Native plantings and rest area

Dogs must be on-leash and are not permitted in foreshore areas.







# ENQUIRE NOW

Robyn Barfoot  
Portfolio Manager  
M. 021 428 446  
Robyn.Barfoot@goodman.com

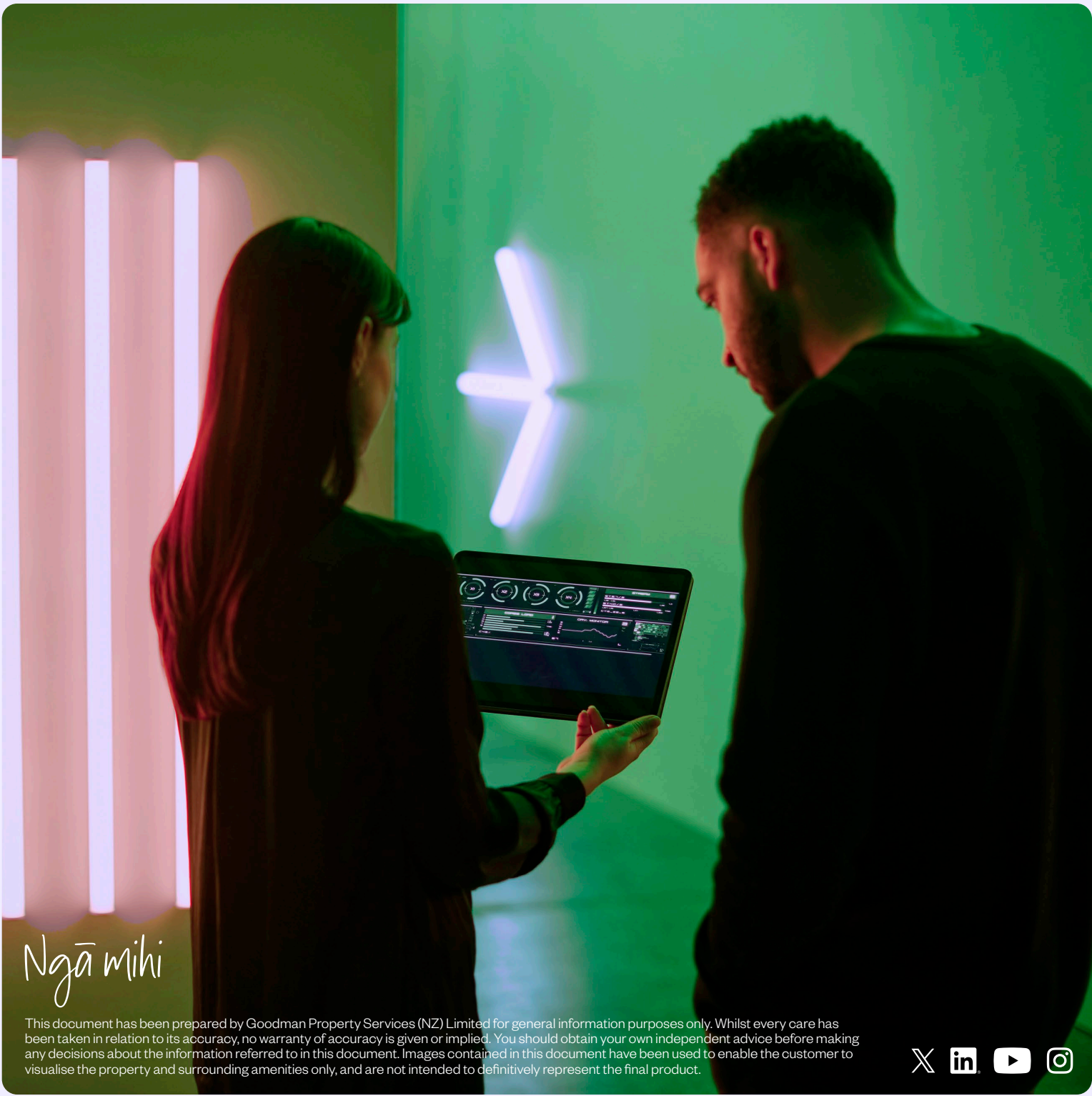
Thomas Papesch  
Asset Manager  
M.021 033 4267  
Thomas.Papesch@goodman.com

Goodman Property  
Level 2, KPMG Centre 18 Viaduct Harbour Avenue  
Auckland 1010  
PO Box 90940  
Victoria Street West, Auckland  
T. 0800 375 6060

[VIEW THIS PROPERTY ONLINE](#)



Goodman is proudly Toitū carbonzero certified. The accreditation is internationally recognised, giving customers and stakeholders confidence that the business is measuring, reducing, and offsetting its carbon emissions.



*Ngā mihi*

This document has been prepared by Goodman Property Services (NZ) Limited for general information purposes only. Whilst every care has been taken in relation to its accuracy, no warranty of accuracy is given or implied. You should obtain your own independent advice before making any decisions about the information referred to in this document. Images contained in this document have been used to enable the customer to visualise the property and surrounding amenities only, and are not intended to definitively represent the final product.

