

# 30 Highbrook Drive

# OFFICE

HIGHBROOK

Goodman



Level 1 office

Car parks

Availability  
(or earlier by negotiation)

565 sqm

18

Aug 25



30 Highbrook Drive

# KEY FEATURES

High quality office, situated in Highbrook Business Park and surrounded by all the Highbrook Crossing amenities. Including cafés, restaurants, gym and accommodation.

---

Car parks available

---

Modern fitout

---

Signage opportunities

---

500 m from Highbrook Crossing

---

# STRATEGIC LOCATION

Located in East Tāmaki, just off the Southern Motorway, Highbrook Business Park is easily accessible from any direction. Its clearly marked road system makes navigation within the park simple. Highbrook Drive boasts a high profile with over 30,000 commuters every day. Highbrook Crossing, the hub of Highbrook, offers ample car parking, bus stops, cafés, restaurants, a gym, and childcare facilities.



Highbrook Drive

30 Highbrook Drive

Business Parade South

Highbrook Crossing

Highbrook Drive

Pukekiwiri Place

Business Parade North

Waouru Road

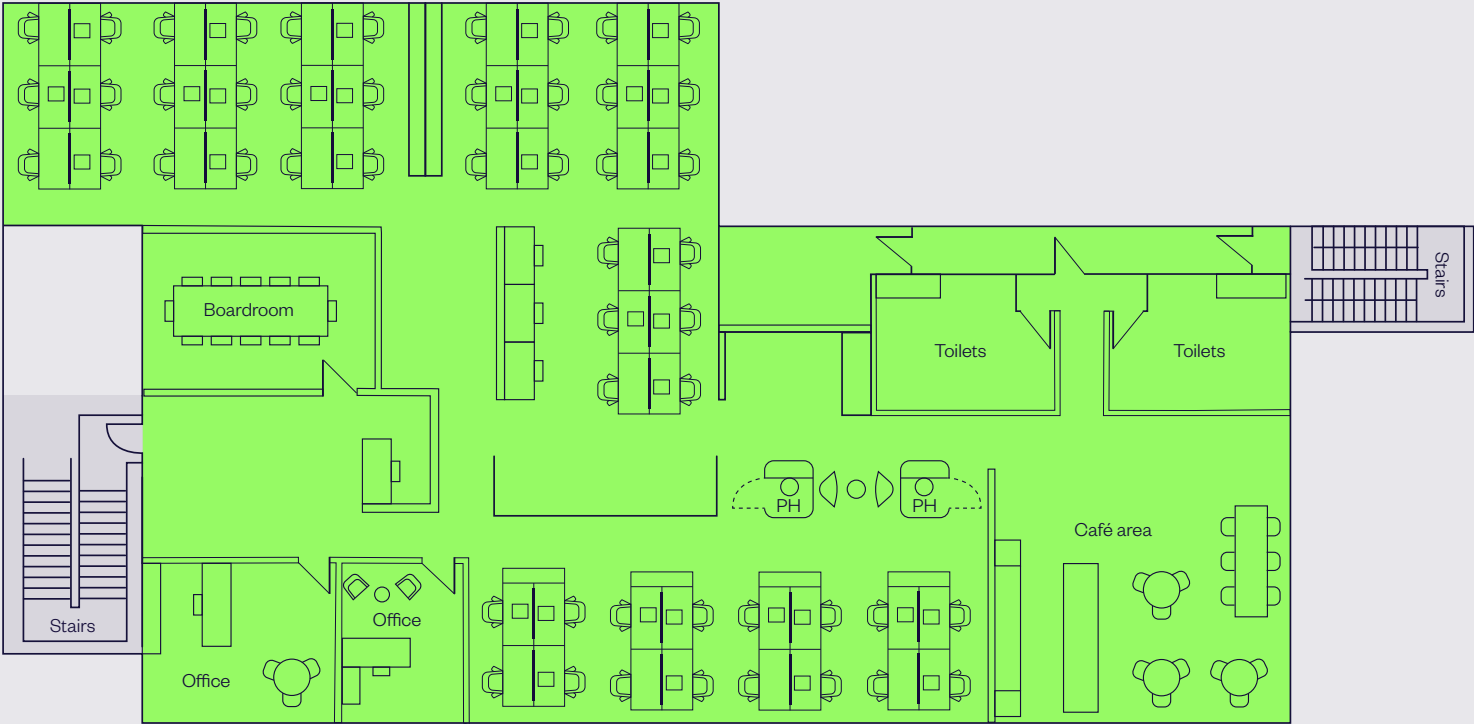
SH1 →

# PROPOSED LAYOUT

Level 1 office	585 sqm
Car parks	18
Est total occupancy	58
Hotdesk allowance	9

Address

30 Highbrook Drive,  
East Tāmaki, Auckland



*\*Furniture not included. Subject to Goodman approval.*

# KEY INFRASTRUCTURE

## HIGHBROOK BUSINESS PARK



### Key Features



1km to SH1



5km to Botany  
Town Centre



16km to Airport



18km to CBD

This aerial photograph shows the Highbrook industrial estate, a large commercial and industrial park situated along the coast. The estate is densely packed with various industrial buildings, warehouses, and offices. Numerous companies are labeled with text boxes pointing to their respective locations. The labels include:

- United Flowers
- Cottonsoft
- Fackelmann
- Viscount FOC
- SafeSmart Rentals
- Spicers
- MetroGlass
- Altus
- Kia
- Scalzo
- NXP
- Viridian
- 4 Waiouru Road
- Wiggins
- Machineryhouse
- Steel & Tube Roofing
- Steel & Tube Coil and Purlin
- The Service Company
- Bradnam's
- Mainfreight
- Business Parade North
- PMA Global
- F&P Healthcare
- Bradnam's
- Collers House
- Open Country House
- Wynyard Wood House
- Jetts Gym
- Quest
- OW Online
- RSM House
- Garmin
- pH7
- Building 6
- Carpark building
- Paramount Safety
- Z Service Station
- Highbrook Drive
- Highbrook Crossing Units
- Parade Units
- Active Explorers
- K&S Freighters
- Kerwyn Ave Units
- Highbrook Drive Multi-Units
- Move Logistics
- DHL
- Charta
- Produce Pronto
- AB Equipment
- NZ Post
- NZ Post Akld Regional Mail Centre
- Nisbets
- Courier Post
- Ford Warehouse
- Stanley Black and Decker
- Supply Chain Solutions
- Beijer Ref AB
- ACCO
- Kyndryl
- FedEx
- Blackwoods Paykel
- OfficeMax
- El Kobar Drive
- NZ Blood
- Highbrook Showrooms
- Ford Building
- Honda
- Just Group
- NZ Freightways
- Online Distribution
- Premium Apparel
- FDM
- Mercury Marine
- Jost
- Big Chill Supersite
- Pukekiwiriki Place

The estate is bordered by a body of water to the south and west, and a residential area to the north and east. The roads within the estate are clearly marked, including Highbrook Drive, El Kobar Drive, and Waiouru Road.

Over 140 businesses and 6,000 people.



# HIGHBROOK BUSINESS PARK LOCAL AMENITIES

Highbrook Crossing — a focal point for a growing community.



## **Banks & professional services**

- + Kiwibank Business Banking
- + Wynyard Wood  
Lawyers & Notaries
- + RSM Accountants
- + Colliers
- + Barfoot & Thompson
- + Public Trust
- + Te Pūkenga – EarnLearn
- + BSM Group Architects
- + BNZ Partners
- + BDO – Auckland
- + Forsyth Barr Investment  
Advisors
- + Professional Building  
Consultants
- + Co\working Highbrook

## **Accommodation**

- + Quest Highbrook  
Serviced Apartments  
— providing 120 rooms

## **Fitness**

- + Jetts 24-hour Fitness

## **Highbrook Parklands**

Beautiful parklands with 8 km cycle, running, walking track and stunning coastal views over the Tāmaki River.

## **Childcare**

- + Active Explorers' Childcare

## **Cafés and restaurants**

- + Subway
- + Hollywood Bakery Espresso
- + Kagura Sushi Donburi Bánh Mì
- + Namaste Indian Restaurant  
& Bar
- + Olea Café & Eatery
- + Tuck Shop

## **Convenience retail**

- + Z Service Station
- + Smile Superette Lotto

## **Car parking**

- + Highbrook Crossing has  
90 minutes free parking  
pay by plate car parks and  
temporary short term parks
- + A multi-level car park  
providing 343 spaces

## **EV Charging**

- + Two ChargeNet fast chargers  
are located in the 90min free  
car park on Tūhana Lane.
- + Between the 2 chargers  
there are 3x CCS and 1x  
CHAdeMO cables, so 4 EVs  
could charge at one time.
- + There is plenty of space for  
larger vans or small trucks too.

## **Medical**

Highbrook Medical Hub provides doctors, pharmacy, clinical psychologists, dentists and physiotherapists.

They also have a mobile consult van with a clinical team that can come to your office and perform health checks with your team. Very handy for everyone at Highbrook to visit.



# HIGHBROOK PUBLIC TRANSPORT

The convenient location is well serviced by bus and train.

## Buses

There are several bus stops close to and from Highbrook Drive:

- + **031** Māngere Town Centre, Papatoetoe Hunters Corner, Otara, Botany.
- + **070** Ellerslie, Newmarket, Botany, Pakuranga, Panmure, City.
- + **351** Botany, Highbrook, Ōtāhuhu Town Centre, Ōtāhuhu Station. (Monday to Friday only)
- + **352** Panmure, Highbrook, East Tāmaki, Manukau.
- + **353** Manukau, Preston Rd, Springs Rd, Harris Rd, Botany Town Centre.

## Trains

The Eastern and Southern line trains are available at Ōtāhuhu train station, located 2 km away from Highbrook Business Park. Only a 30 minute ride on bus line **351**.



# HIGHBROOK WALKING & BIKING TRACKS



Street and public car parks shown

EV charger station

Hivebrook: Honeybee hives

Ngahere: Native plantings and rest area

Dogs must be on-leash and are not permitted in foreshore areas.



[VIEW WEBSITE NOW](#)



# ENQUIRE NOW

Robyn Barfoot  
Portfolio Manager  
M. 021 428 446  
Robyn.Barfoot@goodman.com

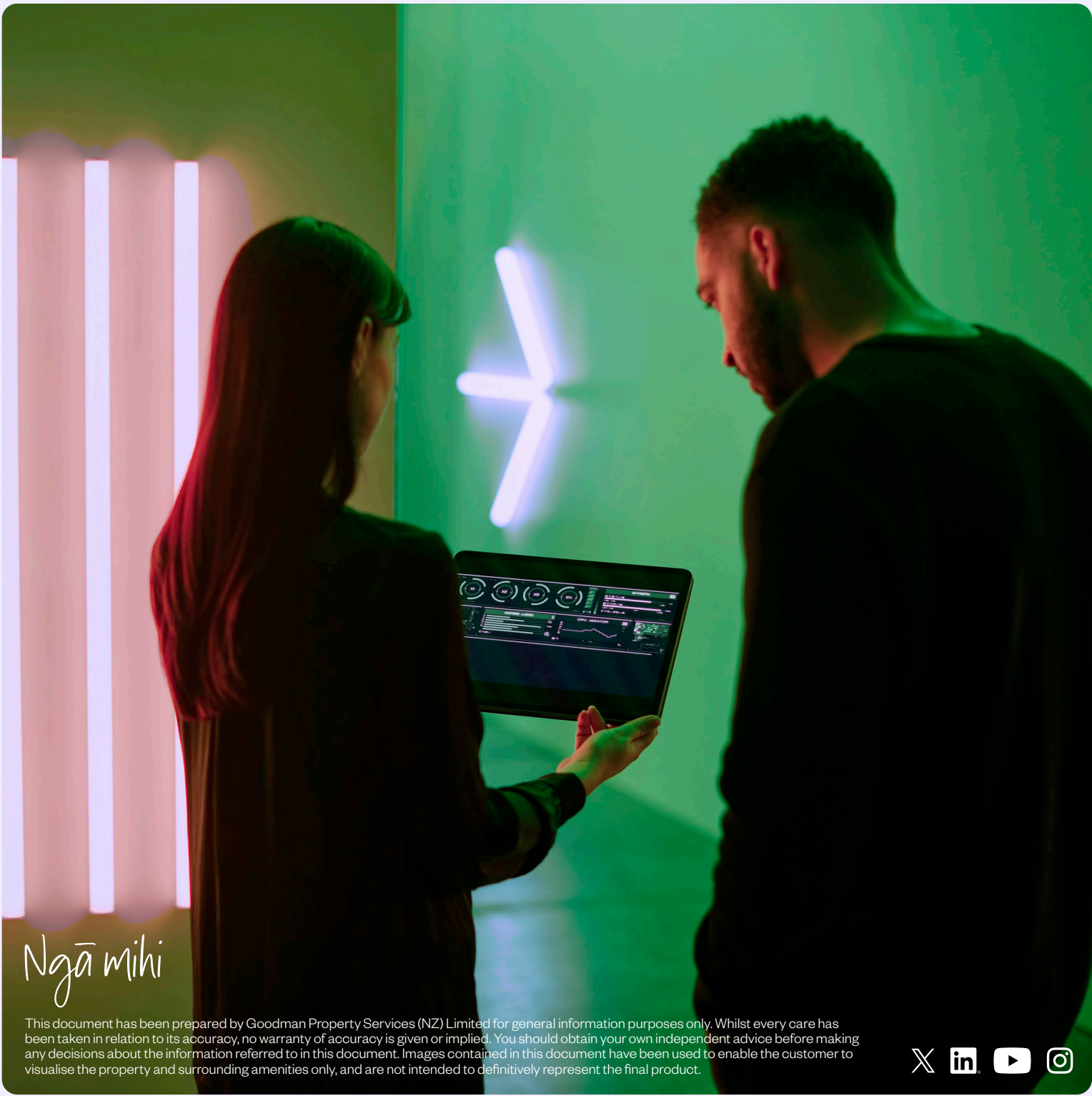
Thomas Papesch  
Asset Manager  
M.021 033 4267  
Thomas.Papesch@goodman.com

Goodman Property  
Level 2, KPMG Centre 18 Viaduct Harbour Avenue  
Auckland 1010  
PO Box 90940  
Victoria Street West, Auckland  
T. 0800 375 6060

[VIEW THIS PROPERTY ONLINE](#)



Goodman is proudly Toitū carbonzero certified. The accreditation is internationally recognised, giving customers and stakeholders confidence that the business is measuring, reducing, and offsetting its carbon emissions.



Ngā mihi

This document has been prepared by Goodman Property Services (NZ) Limited for general information purposes only. Whilst every care has been taken in relation to its accuracy, no warranty of accuracy is given or implied. You should obtain your own independent advice before making any decisions about the information referred to in this document. Images contained in this document have been used to enable the customer to visualise the property and surrounding amenities only, and are not intended to definitively represent the final product.

