

Building 6, 64/1C Highbrook Drive

HIGHBROOK

Goodman

# OFFICE



Level 1 office

Car parks

Availability

288 sqm

Available

Late 2025





Level 1C, Building 6

# KEY FEATURES

A three level commercial building located in the heart of Highbrook offering views over the Tāmaki River.

Join blue chip multi-national businesses such as Kia and Schneider.

5 Star NABERSNZ rating\*

Exposure to the 30,000 commuters next to the amenities at Highbrook Crossing.

Direct access to SH1

Fit-out included (furniture not included)

\*The NABERSNZ tool rates a building's energy efficiency. By providing our customers with more energy efficient buildings we are helping to reduce operational emissions as well as operating expenses.



# STRATEGIC LOCATION

Located in East Tāmaki, just off the Southern Motorway, Highbrook Business Park is easily accessible from any direction. Its clearly marked road system makes navigation within the park simple. Highbrook Drive boasts a high profile with over 30,000 commuters every day. Highbrook Crossing, the hub of Highbrook, offers ample car parking, bus stops, cafés, restaurants, a gym, and childcare facilities.



Highbrook Drive

Business Parade South

Highbrook Crossing

Building 6

Highbrook Drive

Pukekiwiri Place

Business Parade North

Waouru Road

SH1 →



# SITE PLAN

Level 1C office

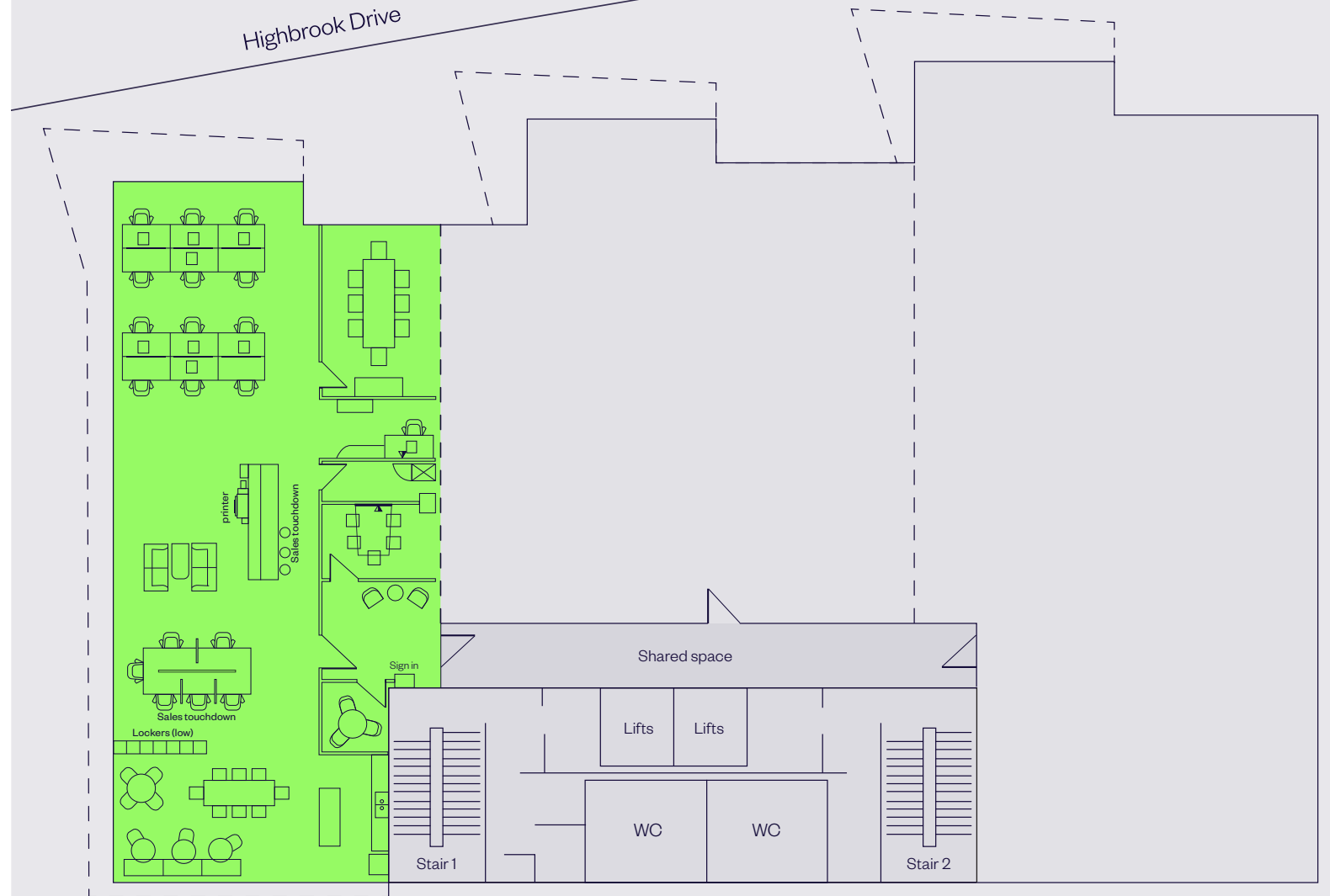
288 sqm

Car parks on grade

Available

## Address

Building 6, 64/1C Highbrook Drive,  
East Tāmaki, Auckland



\*Furniture not included



# KEY INFRASTRUCTURE

## HIGHBROOK BUSINESS PARK



### Key Features



1km to SH1



5km to Botany  
Town Centre



16km to Airport



18km to CBD



This aerial photograph shows the Highbrook industrial estate, a large commercial and industrial park situated along the coast. The estate is densely packed with various industrial buildings, warehouses, and commercial units. Numerous companies are labeled throughout the site, including DHL, BMW, Charta, Produce Pronto, Move Logistics, Kerwyn Ave Units, Junction Units, AB Equipment, NZ Post, and the Akid Regional Mail Centre. Other prominent labels include PMA Global, F&P Healthcare, Collers House, Open Country House, Wynyard Wood House, Jett's Gym, Quest, RSM House, Building 6, Paramount Safety, Panasonic, Stanley Black and Decker, Courier Post, Supply Chain Solutions, Big Chill Supersite, Beier Ref AB, ACCO, Kyndryl, OfficeMax, Blackwoods Paykel, FedEx, and NZ Post. The estate is bordered by the sea to the south and west, and by residential areas and green spaces to the north and east. Key roads like Highbrook Drive, El Kobar Drive, and Waiouru Road are visible, along with the Pukekiriwi Place. The image provides a comprehensive overview of the industrial landscape and its various occupants.

Over 140 businesses and 6,000 people.





# HIGHBROOK BUSINESS PARK LOCAL AMENITIES

Highbrook Crossing — a focal point for a growing community.



## **Banks & professional services**

- + Kiwibank Business Banking
- + Wynyard Wood  
Lawyers & Notaries
- + RSM Accountants
- + Colliers
- + Barfoot & Thompson
- + Public Trust
- + Te Pūkenga – EarnLearn
- + BSM Group Architects
- + BNZ Partners
- + BDO – Auckland
- + Forsyth Barr Investment  
Advisors
- + Professional Building  
Consultants
- + Co\working Highbrook

## **Accommodation**

- + Quest Highbrook  
Serviced Apartments  
— providing 120 rooms

## **Fitness**

- + Jetts 24-hour Fitness

## **Highbrook Parklands**

Beautiful parklands with 8 km cycle, running, walking track and stunning coastal views over the Tāmaki River.

## **Childcare**

- + Active Explorers' Childcare

## **Cafés and restaurants**

- + Subway
- + Hollywood Bakery Espresso
- + Kagura Sushi Donburi Bánh Mì
- + Namaste Indian Restaurant  
& Bar
- + Olea Café & Eatery
- + Tuck Shop

## **Convenience retail**

- + Z Service Station
- + Smile Superette Lotto

## **Car parking**

- + Highbrook Crossing has 90 minutes free parking pay by plate car parks and temporary short term parks
- + A multi-level car park providing 343 spaces

## **EV Charging**

- + Two ChargeNet fast chargers are located in the 90min free car park on Tūhana Lane.
- + Between the 2 chargers there are 3x CCS and 1x CHAdeMO cables, so 4 EVs could charge at one time.
- + There is plenty of space for larger vans or small trucks too.

## **Medical**

Highbrook Medical Hub provides doctors, pharmacy, clinical psychologists, dentists and physiotherapists.

They also have a mobile consult van with a clinical team that can come to your office and perform health checks with your team. Very handy for everyone at Highbrook to visit.





# HIGHBROOK PUBLIC TRANSPORT

The convenient location is well serviced by bus and train.

## Buses

There are several bus stops close to and from Highbrook Drive:

- + **031** Māngere Town Centre, Papatoetoe Hunters Corner, Otara, Botany.
- + **070** Ellerslie, Newmarket, Botany, Pakuranga, Panmure, City.
- + **351** Botany, Highbrook, Ōtāhuhu Town Centre, Ōtāhuhu Station. (Monday to Friday only)
- + **352** Panmure, Highbrook, East Tāmaki, Manukau.
- + **353** Manukau, Preston Rd, Springs Rd, Harris Rd, Botany Town Centre.

## Trains

The Eastern and Southern line trains are available at Ōtāhuhu train station, located 2 km away from Highbrook Business Park. Only a 30 minute ride on bus line **351**.






# HIGHBROOK WALKING & BIKING TRACKS



 Street and public car parks shown

 EV charger station

 Hivebrook: Honeybee hives

 Ngahere: Native plantings and rest area

Dogs must be on-leash and are not permitted in foreshore areas.







# ENQUIRE NOW

Robyn Barfoot  
Portfolio Manager  
M. 021 428 446  
Robyn.Barfoot@goodman.com

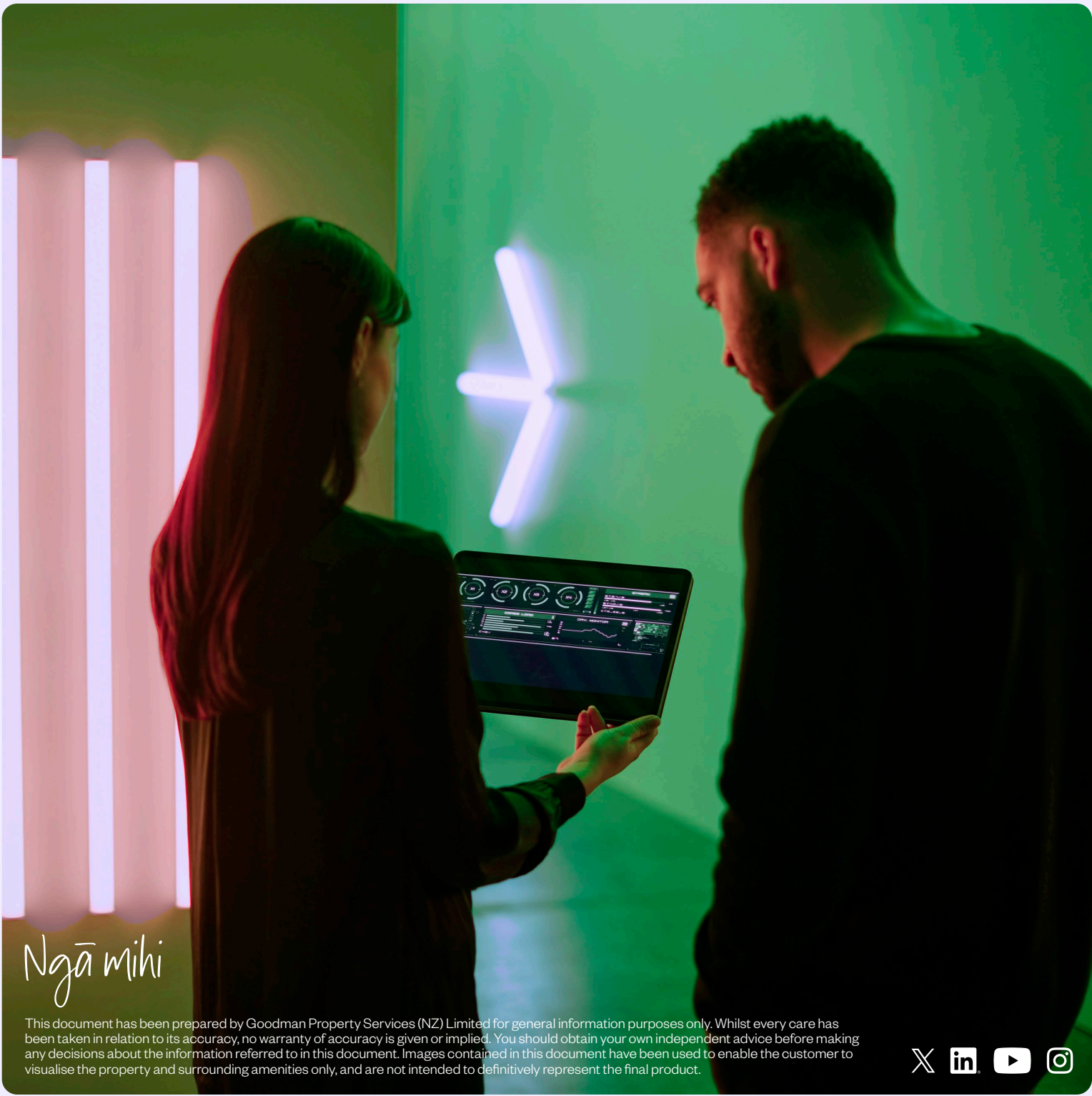
Thomas Papesch  
Asset Manager  
M.021 033 4267  
Thomas.Papesch@goodman.com

Goodman Property  
Level 2, KPMG Centre 18 Viaduct Harbour Avenue  
Auckland 1010  
PO Box 90940  
Victoria Street West, Auckland  
T. 0800 375 6060

[VIEW THIS PROPERTY ONLINE](#)



Goodman is proudly Toitū carbonzero certified. The accreditation is internationally recognised, giving customers and stakeholders confidence that the business is measuring, reducing, and offsetting its carbon emissions.



*Ngā mihi*

This document has been prepared by Goodman Property Services (NZ) Limited for general information purposes only. Whilst every care has been taken in relation to its accuracy, no warranty of accuracy is given or implied. You should obtain your own independent advice before making any decisions about the information referred to in this document. Images contained in this document have been used to enable the customer to visualise the property and surrounding amenities only, and are not intended to definitively represent the final product.

