

21 EL KOBAR DRIVE

WAREHOUSE + GROUND FLOOR OFFICE / SHOWROOM



Office + Showroom
(subject to final measurement)

702 sqm

Warehouse

4,473 sqm

Canopy

772 sqm

Yard

710 sqm

Warehouse Office

80 sqm

Car parks

57

Availability

April 26



Situated on the prominent corner of El Kobar Drive and Business Parade South. Surrounded by warehouse and distribution businesses including Officemax, Panasonic, Stanley Black & Decker and NZ Post.

Secured yard

Great access to Highbrook Drive and State Highway 1

9.3m high stud

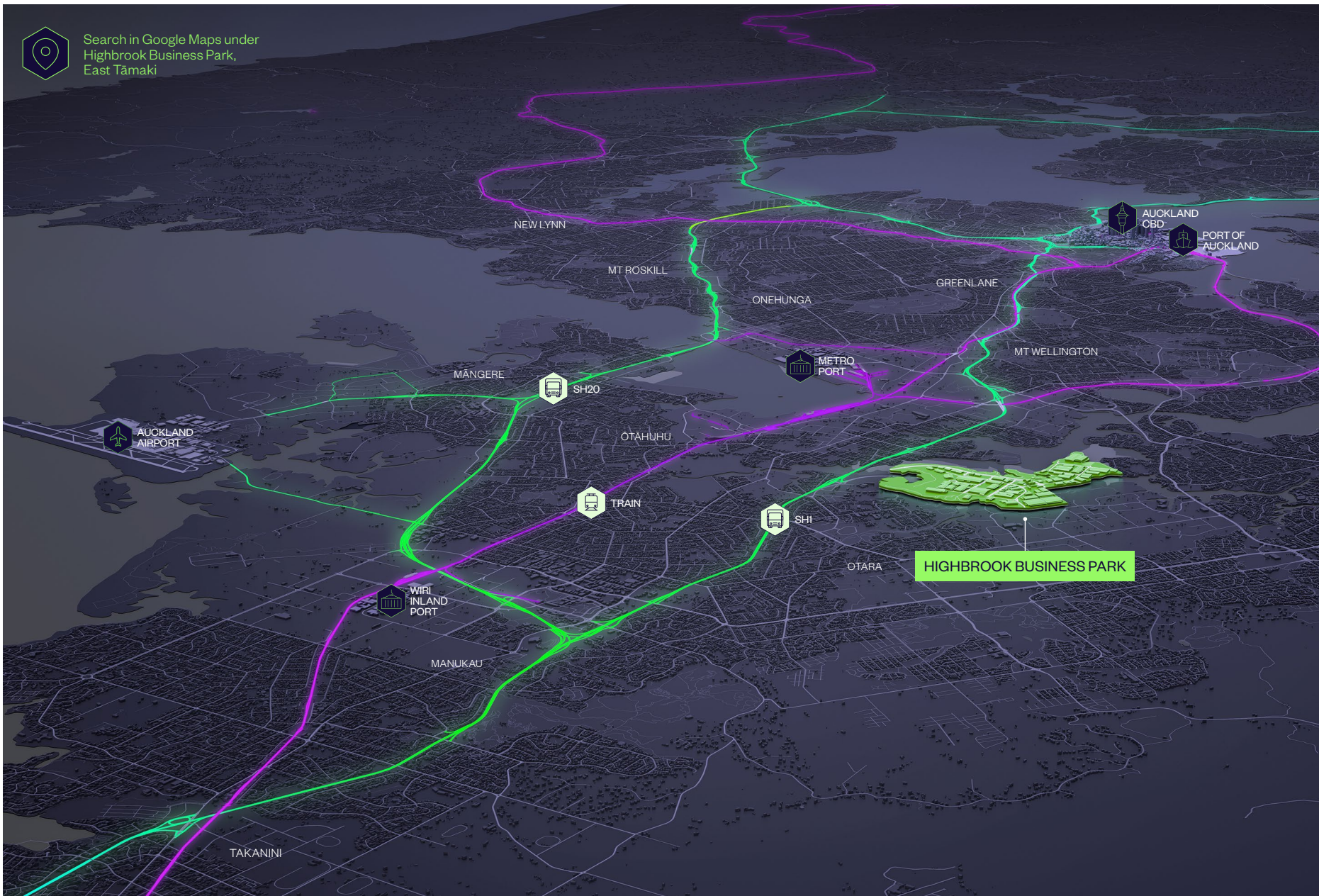


Image shown for illustration purposes and may not be an exact representation of area.

PROPERTY FEATURES

KEY INFRASTRUCTURE

HIGHBROOK BUSINESS PARK



DRIVE TIME CATCHMENT*

Highbrook Business Park
from 60 Highbrook Drive as at 01 May 2024.

10 minute drive

 120,000
POPULATION

 3.9bn
PURCHASING POWER

20 minute drive

 560,000
POPULATION

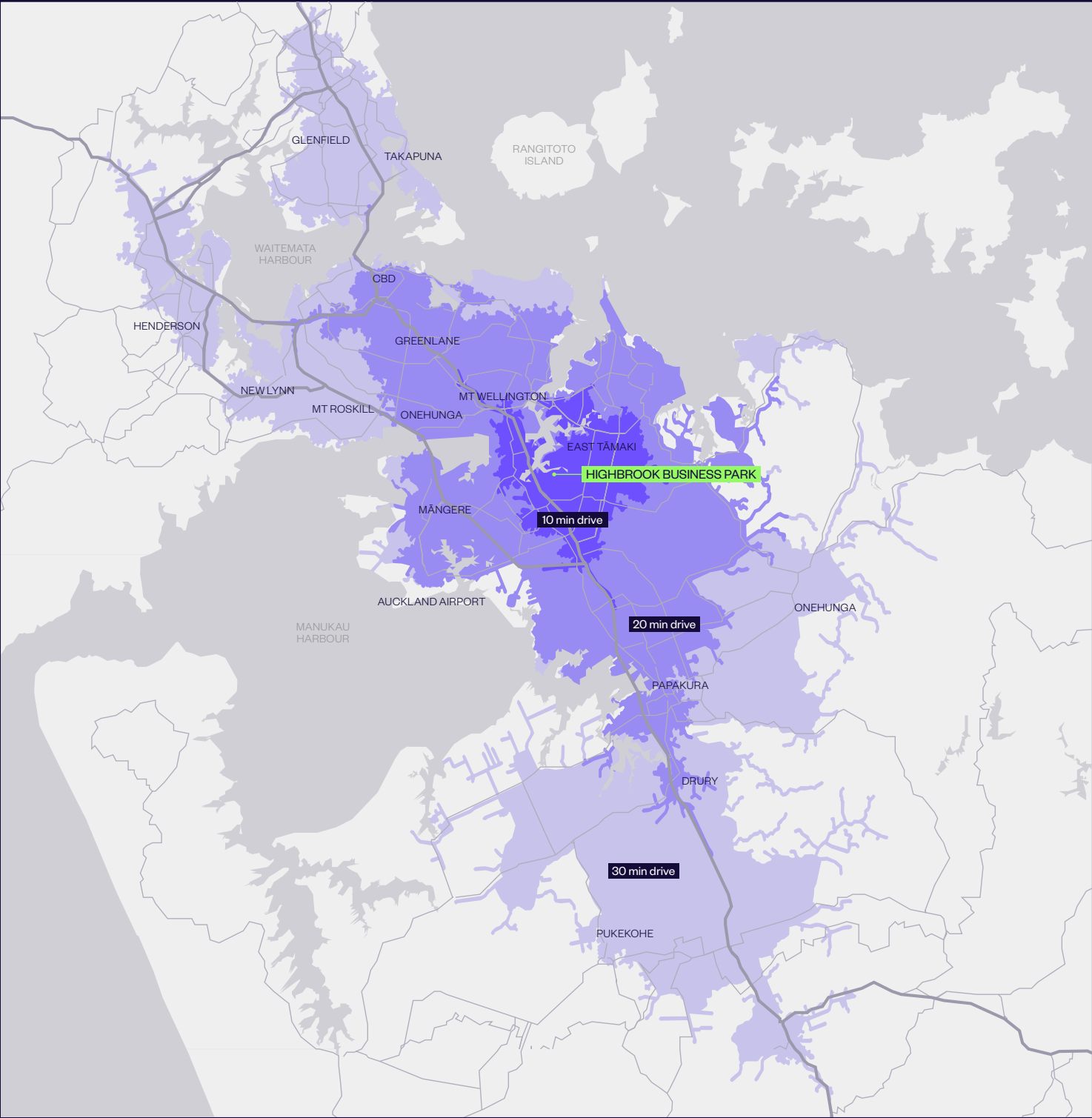
 20.4bn
PURCHASING POWER

30 minute drive

 960,000
POPULATION

 38.1bn
PURCHASING POWER

* Purchasing Power describes the disposable income (income without taxes and social security contributions, including received transfer payments) of a certain area's population. The figures are in New Zealand Dollars (NZD). Population is rounded to the nearest 10,000. Source: Michael Bauer Research 2021. Drive times are taken at 12pm. Source: Esri. These statistics are provided as an indicative guide and while care has been taken in relation to accuracy, no warranty is given or implied.



STRATEGIC LOCATION



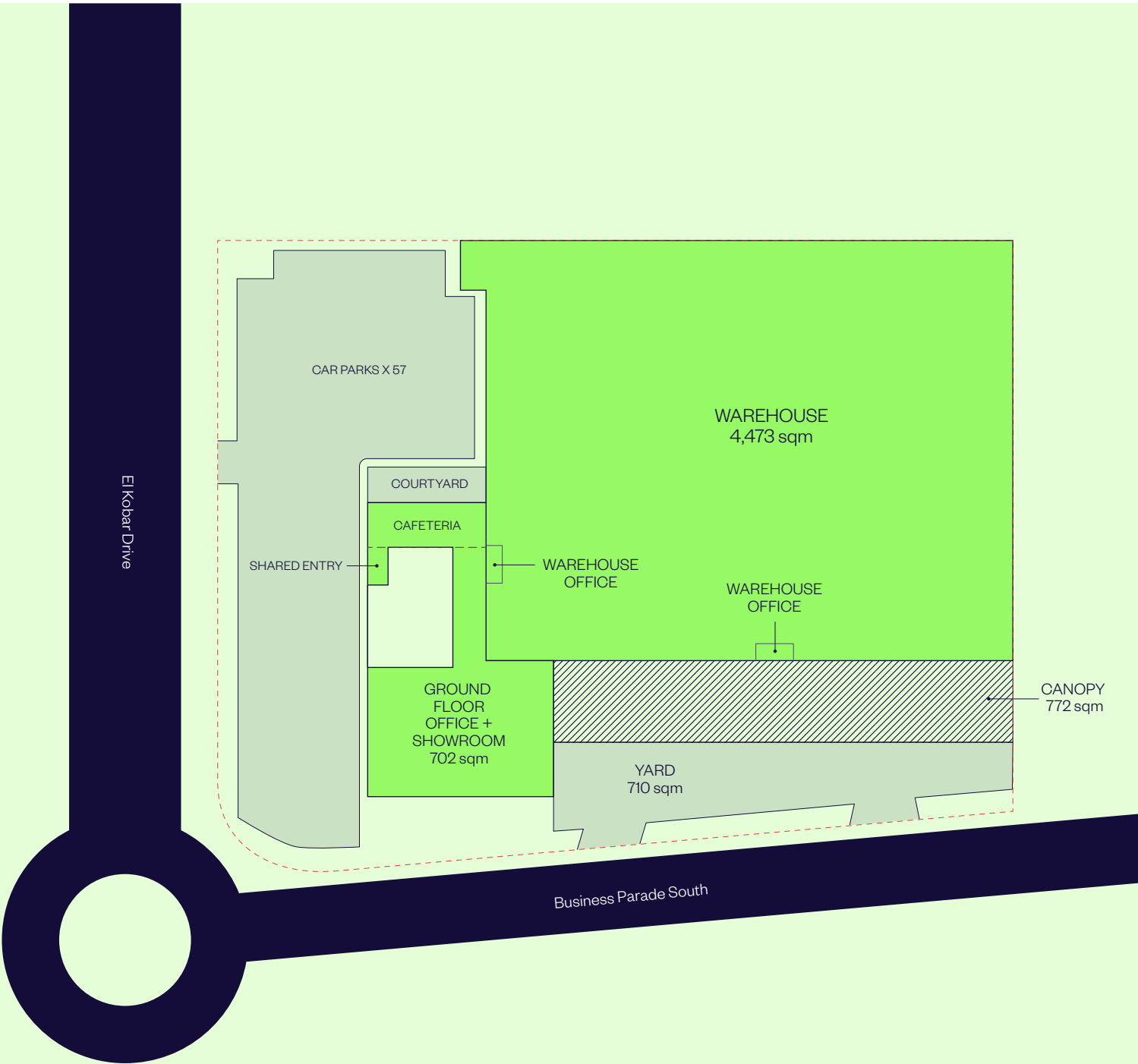
Highbrook Business Park is located in East Tāmaki, just off the Southern Motorway, and easy to locate and access from any direction. It's clearly marked roading system makes navigation within the park simple.

Highbrook Crossing is the hub of Highbrook with eateries, serviced apartments, childcare, gym, coworking space, 90 minutes free parking, bus links and more.

SITE PLAN

Ground Floor Office / Showroom (subject to final measurement)	702 sqm
Warehouse	4,473 sqm
Canopy	772 sqm
Warehouse Office	80 sqm
Yard	710 sqm
Car parks on grade	57

Address	
Ground Floor, 21 El Kobar Drive, East Tāmaki, Auckland	



PUBLIC TRANSPORT

HIGHBROOK BUSINESS PARK



The convenient location is well serviced by bus and train.



Buses

There are several bus stops close to and from Highbrook Drive:

- + **031** Mangere Town Centre, Papatoetoe Hunters Corner, Otara, Botany.
- + **070** Ellerslie, Newmarket, Botany, Pakuranga, Panmure, City.
- + **351** Botany, Highbrook, Ōtāhuhu Town Centre, Ōtāhuhu Station. (Monday to Friday only)
- + **352** Panmure, Highbrook, East Tamaki, Manukau.
- + **353** Manukau, Preston Rd, Springs Rd, Harris Rd, Botany Town Centre.

Trains

The Eastern and Southern line trains are available at Ōtāhuhu train station, located 2 km away from Highbrook Business Park. Only a 30 minute ride on bus line **351**.

AMENITIES

HIGHBROOK BUSINESS PARK



Highbrook Crossing — a focal point for a growing community.



Cafés and restaurants

- + Subway
- + Hollywood Bakery Espresso
- + Kagura Sushi Donburi Bánh Mì
- + Namaste Indian Restaurant & Bar
- + Olea Café & Eatery
- + Tuck Shop

Convenience retail

- + Z Service Station
- + Smile Superette Lotto



Car parking

- + Highbrook Crossing has 90 minutes free parking pay by plate car parks and temporary short term parks
- + A multi-level car park providing 343 spaces



EV Charging

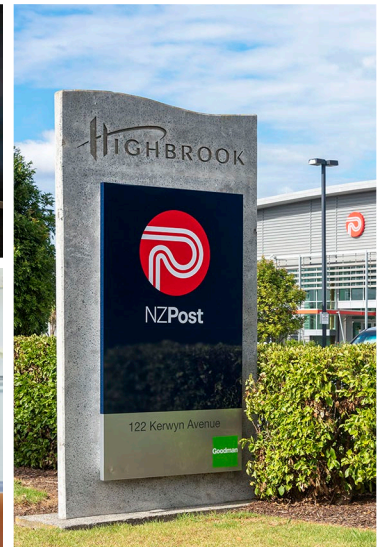
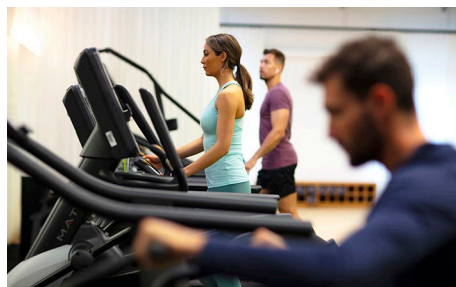
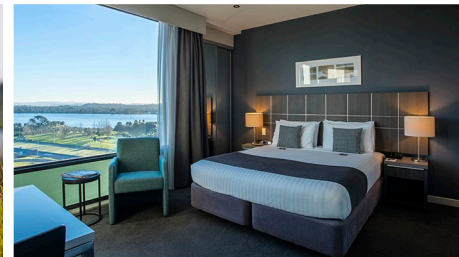
- + Two ChargeNet fast chargers are located in the 90min free car park on Tūhana Lane.
- + Between the 2 chargers there are 3x CCS and 1x CHAdeMO cables, so 4 EVs could charge at one time.
- + There is plenty of space for larger vans or small trucks too.

AMENITIES

HIGHBROOK BUSINESS PARK



Highbrook Crossing — a focal point for a growing community.



Banks & professional services

- + Kiwibank Business Banking
- + Wynyard Wood Lawyers & Notaries
- + RSM Accountants
- + Colliers
- + Barfoot & Thompson
- + Public Trust
- + Te Pūkenga – EarnLearn
- + BSM Group Architects
- + BNZ Partners
- + BDO – Auckland
- + Forsyth Barr Investment Advisors
- + Professional Building Consultants
- + Co\working Highbrook

Accommodation

- + Quest Highbrook Serviced Apartments — providing 120 rooms

Recreation

Gym:

- + Jetts 24-hour Fitness

Childcare

- + Active Explorers' Childcare

Highbrook Parklands:

Beautiful parklands with 8 km cycle, running, walking track and stunning coastal views over the Tāmaki River.

Medical

Highbrook Medical Hub provides doctors, pharmacy, clinical psychologists, dentists and physiotherapists.

They also have a mobile consult van with a clinical team that can come to your office and perform health checks with your team. Very handy for everyone at Highbrook to visit.

Located at 31 Highbrook Drive.
Phone: 09 273 4876 to enrol.

HIGHBROOK WALKING & BIKING TRACKS



Highbrook North Shared Path

Starts at 55 Waiouru Road.

Tucked away behind Highbrook Business Park, you'll find a scenic gravel path that winds around the edge of the Tāmaki River.

Enjoy great views across to Maungarei (Mt Wellington) and Maungakiekie (One Tree Hill). There are plenty of spots (including seating areas) along the way to catch your breath and admire the view. The path is generally even and flat, with a couple of dips in the path where cyclists may need to dismount.

Highbrook South Shared Path

Starts at 12 Pukekiwiriki Place

A peaceful walk or ride south of Highbrook Business Park, perfect for a spot of lunchtime exercise if you work nearby. There are a few slight hills, but it's still easily manageable on foot or bike.

Leave city life behind as you walk or cycle through wide open spaces, and discover great views of the upper Tāmaki River and Ōtara Lake.

Extend your ride or walk by joining up with the Highbrook Path on the other side of Highbrook Drive.

Highbrook loop

Start anywhere on the loop or start and finish at the cafés at Highbrook Crossing, 60 Highbrook Drive.

Meet at Highbrook Crossing cafés and park at the public parking. 8 km of the loop path is on the parklands and 2 km along the street footpaths. You'll enjoy the best of what Highbrook Parklands has to offer.

[VIEW WEBSITE NOW](#)



Highbrook loop: 10 km Loop | 120 Minutes by foot | 60 Minutes by bike



Street and public car parks shown



EV charger station



Hivebrook: Honeybee hives



Ngahere: Native plantings and rest area

Dogs must be on-leash and are not permitted in foreshore areas.



Highbrook North shared path: 11 km Return | 110 Minutes by foot | 55 Minutes by bike

Highbrook South shared path: 5 km Return | 60 Minutes by foot | 30 Minutes by bike



CONTACT

goodmanproperty.co.nz



ENQUIRE NOW

Robyn Barfoot
Portfolio Manager

M. 021 428 446
Robyn.Barfoot@goodman.com

Thomas Papesch
Senior Property Manager

M. 021 033 4267
Thomas.Papesch@goodman.com

Goodman Property
Level 2, KPMG Centre 18 Viaduct Harbour Avenue
Auckland 1010
PO Box 90940
Victoria Street West, Auckland
T. 0800 375 6060

[VIEW THIS PROPERTY ONLINE](#)



Ngā mihi

This document has been prepared by Goodman Property Services (NZ) Limited for general information purposes only. Whilst every care has been taken in relation to its accuracy, no warranty of accuracy is given or implied. You should obtain your own independent advice before making any decisions about the information referred to in this document. Images contained in this document have been used to enable the customer to visualise the property and surrounding amenities only, and are not intended to definitively represent the final product. All values are expressed in New Zealand currency unless otherwise stated. 2024.

