


A woman with dark hair in a ponytail, wearing a light-colored blazer and blue jeans, is walking on a grassy bank. She is smiling and looking towards the right. In the background, there is a body of water and a line of trees under a bright sky. The text 'Highbrook Parklands' is overlaid on the image, with '40 hectares of beautiful parklands' below it.

Highbrook Parklands

40 hectares of beautiful parklands



Enjoy Highbrook's award-winning natural landscapes, wide-open spaces and stunning coastal views across Tāmaki River. The 8km of tracks take you around the Pukekiwiriki Crater, and along the water's edge of Tāmaki River. The tracks are shared by bikers and walkers and seating areas are located throughout the park which are ideal for a little quiet reflection or a picnic with family and friends.

8km of walking and biking tracks

Walking and biking tracks



Highbrook North Shared Path

Starts at 55 Waiouru Road

Tucked away behind Highbrook Business Park, you'll find a scenic gravel path that winds around the edge of the Tāmaki River.

Enjoy great views across to Maungarei (Mt Wellington) and Maungakiekie (One Tree Hill). There are plenty of spots (including seating areas) along the way to catch your breath and admire the view. The path is generally even and flat, with a couple of dips in the path where cyclists may need to dismount.

Highbrook South Shared Path

Starts at 12 Pukekiwiriki Place

A peaceful walk or ride south of Highbrook Business Park, perfect for a spot of lunchtime exercise if you work nearby. There are a few slight hills, but it's still easily manageable on foot or bike.

Leave city life behind as you walk or cycle through wide open spaces, and discover great views of the upper Tāmaki River and Ōtara Lake.

Extend your ride or walk by joining up with the Highbrook Path on the other side of Highbrook Drive.

Highbrook loop

Start anywhere on the loop or start and finish at the cafés at Highbrook Crossing, 60 Highbrook Drive.

Meet at Highbrook Crossing cafés and park at the public parking. 8 km of the loop path is on the parklands and 2 km along the street footpaths. You'll enjoy the best of what Highbrook Parklands has to offer.

Highbrook loop: 10 km Loop

120 Minutes by foot

60 Minutes by bike

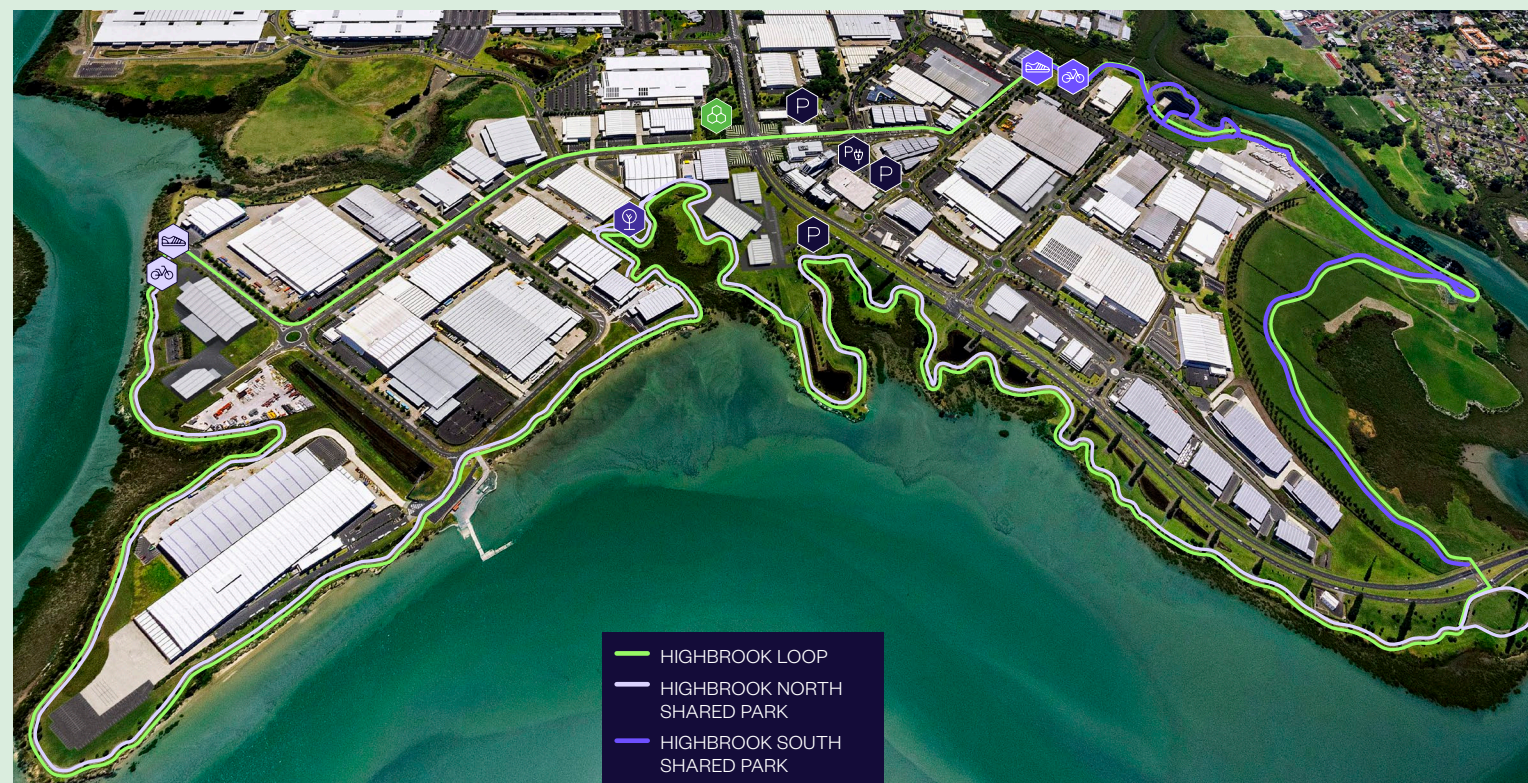
P Street and public car parks shown

Pψ EV charger station

Hivebrook: Honeybee hives

Ngahere: Native plantings and rest area

Dogs must be on-leash and are not permitted in foreshore areas.



Highbrook North shared path: 11 km Return

110 Minutes by foot

55 Minutes by bike

Highbrook South shared path: 5 km Return

60 Minutes by foot

30 Minutes by bike



History

The Waiouru Peninsula was originally part of the Tāmaki Block, also known as the ‘Fairburn Block’. This large land holding estimated to comprise 40,000 acres, was purchased by William Fairburn, a missionary with the Church Missionary Society, from Tuiri of Ngāti Tāwhaki, Herua of Urikaraka and Hauāuru of Matekiwaho in 1836. In 1837, Fairburn returned approximately one third of the land

to Ngāti Pāoa, Ngāti Tamaterā, Ngāti Terau, Te Akitai and Ngāti Whanaunga. In 1841 he gifted another third to the Church Missionary Society. The remainder, Old Land Claim 590, was later purchased by the Crown and is known as the ‘Wairoa Purchase’. Since then the land has been used by several owners as farmland.

The most recent owner was the Fisher family, who eventually owned the entire peninsula and made it the site of their successful Ra Ora stud farm. At Highbrook Crossing you will find several cafés and restaurants, including the historic Fisher House, once the home of the Fisher family. You can enjoy a range of historic photography of the thoroughbreds bred at Ra Ora as well as the famous royals who visited.



Ra Ora stud and Pukekiwiri (Waiouru) crater (1980s).



Tracks around Pukekiwiri (Waiouru) crater (2012) with the completed arterial Highbrook Drive.

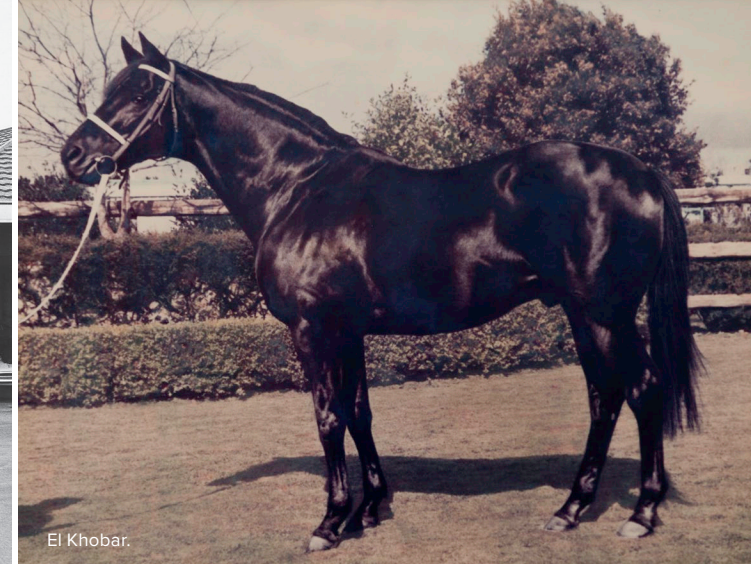
Once a major transport route between Waitematā and Manukau Harbours for local Iwi. The tracks take you around the Pukekiwiri crater, which is one of Auckland’s oldest extinct volcanic craters (estimated 50,000 to 100,000 years), the Pukekiwiri crater rim rises twenty metres above the river terrace.



Left: Her Royal Highness Princess Alexandra and Sir Woolf Fisher ride through the expansive grounds of the Ra Ora Stud during her New Zealand visit in 1971.



The Queen Mother with Sir Woolf Fisher in front of Fisher House (1966).



El Khobar.



The Queen Mother inspecting the horses at Highbrook with Sir Woolf Fisher and the trainer.



Originally called Ra Ora, the property was owned by renowned industrialists and horse breeders, Sir Woolf Fisher and Lady Fisher. It operated as a horse stud from the 1960s to 2001.



Sir Woolf Fisher and Ra Ora Horse Stud



WATCH MORE ABOUT
SIR WOOLF FISHER'S
LEGACY HERE

HIGHBROOK



Tāmaki River view north east to Waitematā harbour.



The local Ngāi Tai and Ngāti Pāoa Iwi are descended from the Tainui canoe (waka) which arrived in the Tāmaki area over 25 generations ago. Members of the canoe settled throughout the region and the Tāmaki River became a major route for the transport of goods and people between the Waitematā and Manukau Harbours, until the construction of the Great South Road in 1863. The Waiouru Peninsula is across the Tāmaki River from the portage between the two harbours which was used by the Tainui and Aotea waka in their initial exploration of New Zealand. The portage and the Tāmaki River were

heavily used by waka taking goods such as vegetables to the Auckland markets up until 1863. Some reports indicate that up to 2,000 waka regularly used the Tāmaki River.

BIRD LIFE

Inter-tidal areas on the Tāmaki River provide an important feeding area for an abundant array of bird life. Kōtare (kingfisher), Karuhiruhi (pied shags), Matuku Moana (white faced heron), Poaka (pied stilts), Spur Winged Plover and Tōrea (South Island oyster catcher) are some of the species found in this area.



Kōtare (Kingfisher).

The Tāmaki River

Cafés and restaurants



SUBWAY



COMING
SOON

Kagura
SUSHI · DONBURI · RANCHO



NAMASTE
INDIAN RESTAURANT & BAR

OLEA
CAFE & EATERY



HOLLYWOOD
BAKERY ESPRESSO

What you need to know

Follow us on our social accounts and stay in the know.  [highbrookcrossing](#)  [Highbrook Business Park](#)



- ▲ Animals must be on-leash and are not permitted in foreshore areas.
- ▲ No drone operations
- ▲ CCTV cameras operating in this area
- ▲ No unauthorised vehicles on grass or tracks
- ▲ Alcohol is prohibited
- ▲ No dumping of rubbish
- ▲ Open from 7:00 am – dusk

Every person enters the park at their own risk. Auckland Council and Goodman Property Trust accepts no responsibility or liability for any injury or damage to persons or property arising as a result of entry to Highbrook Park, however it occurs. Full conditions of entry are shown at various points around the Park. For all queries, please contact Auckland Council via this link: aucklandcouncil.govt.nz

highbrook.co.nz

 HIGHBROOK