

Highlights

INSIDE:

- ▲ EV news
- ▲ Ngahere planting
- ▲ Development progress
- ▲ Investing in green upgrades
- ▲ Office for lease
- ▲ New café



We're excited to announce Olea Café is opening at Highbrook Crossing (replacing Sierra).

OPENING EARLY 2023



OLEA
— CAFE & EATERY

OLEA CAFÉ, GROUND FLOOR,
OPEN COUNTRY HOUSE,
8 BUSINESS PARADE SOUTH,
HIGHBROOK CROSSING.



Follow Highbrook on Facebook to see café updates and win prizes. An e-scooter and vouchers are up for grabs!



Click here, or visit [Highbrook.co.nz](https://www.highbrook.co.nz) to join the mail list to receive Highbrook updates and promotions.

Highbrook has office space for lease ranging from a casual hotdesk to a dedicated office space, visit officeforlease.co.nz

**JOHNSON
CORNER
NOW OPEN**

Johnson Corner now open at Highbrook Crossing

This innovative new space has all the amenities and conveniences of a modern, fully furnished office. Designed and managed by experienced coworking operator, Johnson Corner, you can choose between a bustling open-plan area, or quieter, private office space.



SEVERAL
OPTIONS
TO CHOOSE
FROM:

Office

office space
for small teams

Work lounge
access

hotdesk with a
meeting room

Meeting
rooms

by the hour, half-
day and full-day

Day or
week pass

workspace for
a day or a week



Samir Patel
Johnson Corner Manager
09 265 1133
samir@johnsoncorner.nz

**JOHNSON
CORNER**

Events

CHRISTOPHER LUXON ON LEADERSHIP

Presented by Highbrook
Young Professionals (HYP)
and Business East Tāmaki.

WHEN: Friday
16 September,
5:30 pm – 7:30 pm

WHERE: RSM House,
Level 2,
62 Highbrook
Drive

COST: Free of charge
BOOK: [businessset.org.
nz/whats-on](https://businessset.org.nz/whats-on)

KIWIHARVEST BUSINESS SHOWCASE

Presented by Business East
Tāmaki. Join us on this special
occasion, as we take you
through KiwiHarvest's journey
and share how the business
community has been helping
KiwiHarvest provide much-
needed food support to Kiwis
struggling to make ends meet.

WHEN: Tuesday
20 September,
4:30 pm – 6:00 pm

WHERE: Unit G/70 Business
Parade South

COST: Free of charge
BOOK: [businessset.org.
nz/whats-on](https://businessset.org.nz/whats-on)

MEET YOUR NEIGHBOURS

Sponsored by Goodman
and presented by Business
East Tāmaki. Check out
Johnson Corner and meet
the Goodman team who
takes care of Highbrook.
Drinks and nibbles provided.

WHEN: Thursday
29 September,
4:30 pm – 6:30 pm

WHERE: Johnson Corner,
Ground Level,
Wynyard Wood
House, Highbrook
Crossing

COST: Free of charge
BOOK: [businessset.org.
nz/whats-on](https://businessset.org.nz/whats-on)

HIGHBROOK ROTARY FUN RUN

Rotary is playing catchup after
postponing this event earlier
in the year. It will now be held
in November. Next year it will
go back to the usual April
event date.

Would be great to beat the
2021 record of over 500
participants and more than
\$23,000 raised for charity.
Fabulous event to team build,
get fit and have some fun,
while doing some good in
your local community.

Enter as a team of four or
as an individual. Choose
between 10 km run or 5 km
run/walk.

WHEN: Wednesday
2 November,
meet from 5 pm
for a 5:45 pm start

WHERE: Highbrook Park,
25 Pukekiwiriki
Place

COST: \$25 per person
ENTRY: [highbrookrotary.
org.nz/funrun](https://highbrookrotary.org.nz/funrun)





▲ Artist impression showing pH7 at Highbrook

Welcome new business

MOVES, RELOCATIONS AND EXPANSIONS WITH GOODMAN

▲ SCHNEIDER ELECTRIC

Schneider Electric has moved into the last Highbrook Crossing Unit, an addition to its office space at Building 6, Highbrook Crossing. Schneider Electric is a global specialist in energy management and automation that has been at Highbrook since 2009. The development of the seven units is now complete, with the contemporary design amplified by the high-quality signage of local and international brands.

▲ RYMAN HEALTHCARE

A major provider of retirement villages across New Zealand, Ryman Healthcare, is set to use 55 Waiouru Road to store and distribute materials. Exeed, the previous occupier, has moved to M20 Business Park, also part of the Goodman Portfolio.

▲ BRADNAMS

Bradnams, a window and door specialist, is owned by Altus who have been located at Highbrook since 2012. Altus will continue to operate from 49 Business Parade North with Bradnams trading from their new site at 33 Business Parade North.

▲ NARA GROUP

Architecture and property developer Nara Group has moved into 38 Highbrook Drive. The company specialises in end-to-end resource/building consent plans and construction management.

▲ ABI INTERIORS

ABI interiors, an online retailer of kitchen, bathroom and laundry architectural products, has established its first New Zealand warehouse facility at 111A Kerwyn Avenue. Nexus Foams (a branch of Skellerup), previously in this facility has been with Goodman since 2008 and has moved to Savill Link, a Goodman Estate in Ōtāhuhu.

▲ GARMIN AND pH7

Due for completion towards the end of 2022, the Riverside three-warehouse development is going up next to the main lights along Highbrook Drive. The three warehouses are fully leased to tech company Garmin, hazard solutions provider pH7 and a confidential customer.

▲ JOHNSON CORNER

Johnson Corner, a co-working space, has taken over the ground floor of Wynyard Wood House. This contemporary space will offer flexible hotdesking, offices, meeting rooms and events areas. More information about Johnson Corner in this newsletter.

OLEA CAFÉ

“Our aim for Olea is to serve the best coffee, fantastic food and provide exceptional service in a welcoming environment for the people working around Highbrook. I would like Olea to be their local, where they can dine-in or grab a bite to go. With interiors that will be both beautiful and inviting, it will be the perfect spot to sit and enjoy some time out, have your meetings and host events.”



It will be a contemporary eatery providing indoor and outdoor dining with plenty of parking. Offering in-house made, seasonal cabinet food, dine-in and takeaway, catering and after-hours functions. James Yang, the new owner and manager currently operates The Lunchroom which offers a cosmopolitan seasonal menu in the Auckland CBD and Leafie in 277 Broadway which has become a popular cafe and the busiest in the shopping centre. James also owns Amble and Birch at Goodman's M20 Business Park in Manukau – which is a wonderful addition to the park for locals and visitors.

We're excited to announce Olea Café is opening at Highbrook Crossing (replacing Sierra).

OPENING EARLY 2023



OLEA
CAFE & EATERY

OLEA CAFÉ, GROUND FLOOR, OPEN COUNTRY HOUSE, 8 BUSINESS PARADE SOUTH, HIGHBROOK CROSSING.



Follow Highbrook on Facebook to see café updates and win prizes. An e-scooter and vouchers are up for grabs!



Click here, or visit [Highbrook.co.nz](https://www.highbrook.co.nz) to join the mail list to receive Highbrook updates and promotions.

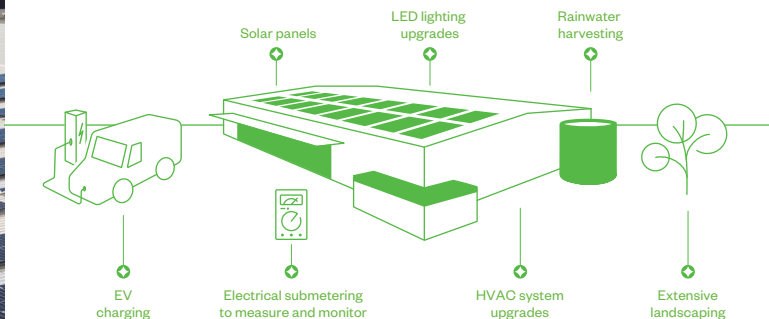


Printed on recyclable FSC recycled carbon neutral paper (see page 6 of this PDF for details).



▲ PMA Global, Business Parade North, solar panels installed on their existing building.

BUILDING UPGRADE FEATURES



DEVELOPMENT UPDATE

A new facility for **NZ Blood** is going up on Highbrook Drive, next to the ARB showroom. A new customer to Highbrook, NZ Blood is already well underway – the steel frame is up and the building is due to be completed at the end of 2022.

Stanley Black and Decker is expanding into a new larger facility at Highbrook on El Kobar Drive. The facility structure is up, and full completion is targeted for early 2023.

Two new warehouses are underway at the end of Business Parade North, and expected to complete mid-2023. Both facilities are already committed – **Viscount FCC**, an innovator in reusable packaging for the produce industry, and a confidential customer.

▲ Artist impression of the new NZ Blood Facility on the corner of Highbrook Drive and El Kobar Drive.



Investing in green upgrades



A range of building upgrade programmes are lifting the environmental performance of Goodman's properties.

"We are investing \$25 million over the next three years to improve the quality and energy efficiency of our existing properties.

With greater awareness around climate change and wellbeing, we are partnering with our customers to deliver more sustainable property solutions."

Tom Slade, Goodman Head of Environmental Sustainability.

Technology is moving rapidly and despite an average age of just over 10 years across Goodman's core investment portfolio, there are new systems and upgrades that can be retrofitted to improve a buildings environmental performance.

The new investment initiatives complement Goodman's development programme, which is providing customers with highly sustainable, Green Star rated facilities.

Many of these businesses are sharing utility data, allowing the operating performance of their buildings to be critically assessed and benchmarked against similar properties within the portfolio.

Electrical submetering and water consumption data provides valuable insights into how a building is performing and where improvements can be made.

Slade said "It is often just small changes like LED lighting and new water saving technologies that can have a big impact on the environmental performance of a building.

Heavy energy users will almost certainly benefit from alternatives such as rooftop solar energy systems."

Goodman is also adding EV chargers for customers and replacing harmful R22 refrigerants in building HVAC systems with low emission factor alternatives.

Slade said "Protecting and improving the natural environment around our estates is another objective of our sustainability programme."

Urban ngahere projects have been planted at Highbrook Business Park and Roma Road Estate recently, with beehive initiatives also planned to improve the biodiversity and resilience of the landscapes within the portfolio.

Slade said "The aggregation of these small but positive changes improves the overall quality of our estates, contributing to better environmental, social and economic outcomes for everyone."

URBAN NGAHERE PROJECT

3,600 NATIVES PLANTED

The Goodman team were on site with their spades in May to help plant over 3,600 native trees and plants at Highbrook Business Park.

The urban ngahere was designed by Shane Everett and Mace Landscape Group to promote biodiversity and create better spaces for everyone to enjoy.



Goodman volunteers



HIGHBROOK DRIVE DISRUPTIONS

Local commuters will be aware of the significant development underway on the former Contact Energy site between the motorway roundabout and the entrance to Highbrook Business Park. This is not a Goodman project, but we are working with the owners and contractors to minimise traffic disruption in this area.

Please take care when driving in this area.

WAREHOUSE G 42 SIR WOOLF FISHER DRIVE



PROPERTY FEATURES

- Gateway to Highbrook Business Park
- High stud warehouse
- Excellent signage opportunities
- Office with views over East Tāmaki River
- Drive through yard

AVAILABLE Early 2024	WAREHOUSE	OFFICE OVER 2 LEVELS	CANOPY	YARD	CAR PARKS
	5,570 sqm	554 sqm	710 sqm	1,922 sqm	47
Robyn Barfoot ASSET MANAGER 021 428 446 Robyn.Barfoot@goodman.com					Thomas Papesch PROPERTY MANAGER 021 033 4267 Thomas.Papesch@goodman.com

WIN! on Highbrook Business Park's facebook page!

Over the next 8 weeks we have 4 promotions to win. Follow us and enter.* You could win an e-scooter, \$200 of Prezzy cards, \$50 Highbrook vouchers or \$100 of Z vouchers.



HOLLYWOOD
BAKERY ESPRESSO

FRESH FOOD
HASTYFIX
ADDICTS

Kagura
JAPANESE DONBUTS

FISHER HOUSE
RESTAURANT | BAR | EVENTS

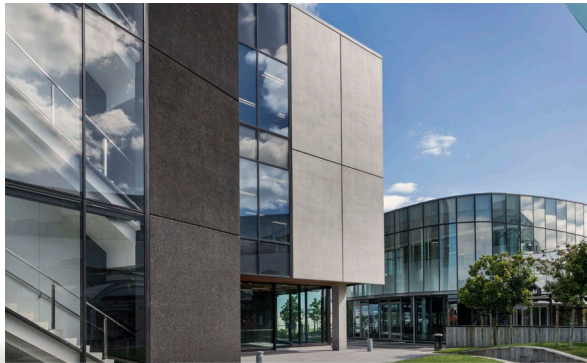
THE 'BROOK
BAR & KITCHEN

NAMASTE
INDIAN RESTAURANT & BAR

SUBWAY

*See Highbrook Business Park facebook page for terms and conditions.

62 Highbrook Drive LEVEL 1, RSM HOUSE



AVAILABLE
NOW

OFFICE

407 sqm

CAR PARKING

Available

60 Highbrook Drive LEVEL 2, WYNARD WOOD HOUSE



AVAILABLE
Dec 2022

OFFICE

417 sqm

CAR PARKING

Available



Robyn Barfoot ASSET MANAGER
021 428 446 Robyn.Barfoot@goodman.com

38 Highbrook Drive UNIT C, LEVEL 1



Photo of similar office

AVAILABLE
Early 2023

OFFICE

232 sqm

CAR PARKING

10

30 Highbrook Drive LEVEL 1, OFFICE



AVAILABLE
Oct 2022

OFFICE

577 sqm

CAR PARKING

Available



Thomas Papesch PROPERTY MANAGER
021 033 4267 Thomas.Papesch@goodman.com



HIGHBROOK MEDICAL HUB IS OPEN

Providing doctors, pharmacy, clinical psychologists, dentists and physiotherapists.

They also have a mobile consult van with a clinical team that can come to your office and perform health checks with your team.

Very handy for everyone at Highbrook to visit.

LOCATED AT:

31 Highbrook Drive
Phone: 09 273 4876 to enrol



This document is printed on FSC®-certified paper that was made carbon neutral by offsetting the emissions generated from its production and transport.

FSC-certified forests are managed with consideration for people, wildlife and the environment. They are independently audited to ensure they meet FSC's Principles and Criteria for Forest Management.

One more step to sustainability new public EV chargers

Goodman has been making space for more EV vehicles by installing a public 150 kW DC fast charger at Highbrook, co-funded by EECA.



LOCATED AT:

Highbrook Crossing,
60 Highbrook Drive,
Highbrook Business Park

